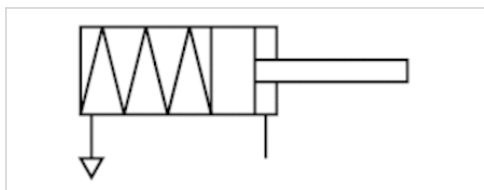


Mini cylinder, Series ICM

- Ø 16-25 mm
- Ports M5 G 1/8
- Single-acting, extended without pressure
- Cushioning elastic
- corrosion-resistant
- with integrated rear eye
- Piston rod External thread
- suitable for use in food processing



Compressed air connection	Internal thread
Working pressure min./max.	3 ... 10 bar
Ambient temperature min./max.	-20 ... 70 °C
Medium temperature min./max.	-20 ... 70 °C
Medium	Compressed air
Max. particle size	50 µm
Oil content of compressed air	0 mg/m³
Pressure for determining piston forces	6.3 bar
Weight	See table below

Technical data

Piston Ø Piston rod thread Ports	16 mm M6 M5	20 mm M8 G 1/8	25 mm M10x1,25 G 1/8
Stroke 25	1326216020	1326220020	1326225020

Technical data

Piston Ø	16 mm	20 mm	25 mm
Retracting piston force	72 N	104 N	198 N
Spring force min. - max.	24 ... 37 N	28 ... 62 N	28 ... 62 N
Stroke max.	25 mm	25 mm	25 mm

Technical information

The pressure dew point must be at least 15 °C under ambient and medium temperature and may not exceed 3 °C .

The oil content of compressed air must remain constant during the life cycle.

Use only the approved oils from AVENTICS. Further information can be found in the "Technical information" document (available in the MediaCentre).

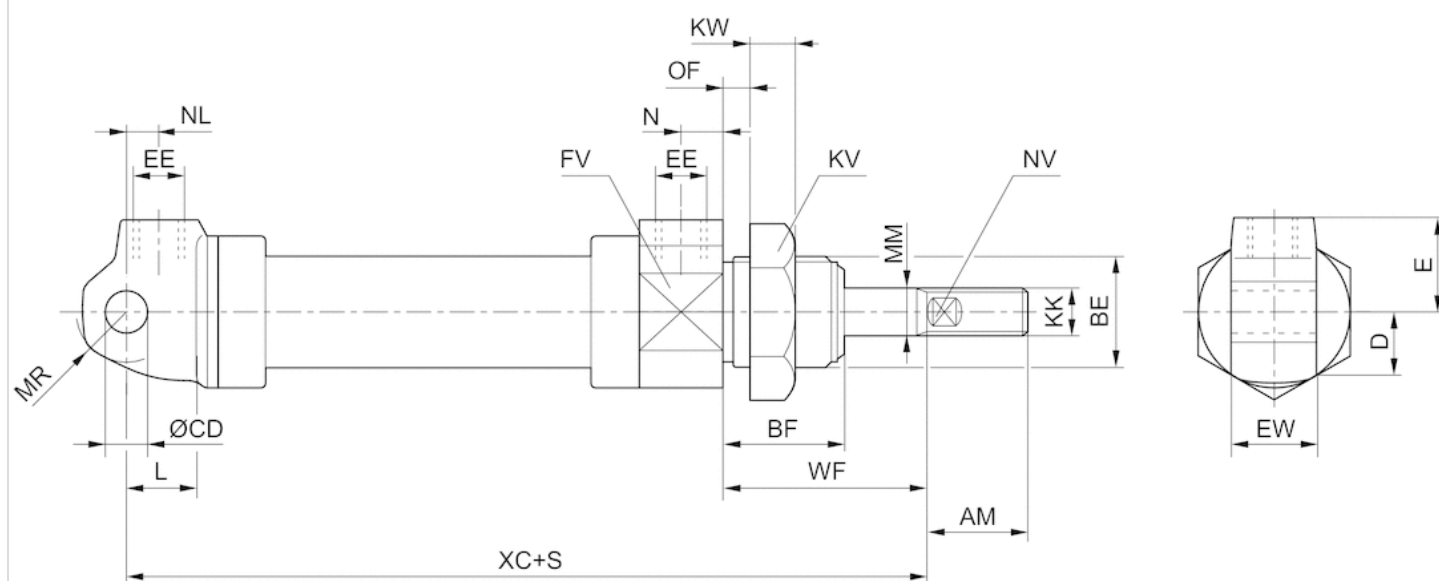
Nut MR3 included in supply

Technical information

Material		
Cylinder tube		Stainless steel
Piston rod		Stainless steel
Front cover		Polyoxymethylene
End cover		Polyoxymethylene
Connection thread		Stainless steel
Seal		Acrylonitrile butadiene rubber
Nut for cylinder mounting		Polyamide
Nut for piston rod		Stainless steel
Scraper		Polyurethane
Grease		AGF (NSF-H1)

Dimensions

Dimensions



S = stroke

Dimensions

Piston \varnothing	AM	BE	BF	CD H11	D	E	EE	EW d13	FV	KK	KV	KW	L	MM	MR	N	NL	NV
16 mm	16	M16x1,5	20	6	12	14	M5	12	24	M6	24	7	9	6	7.5	5	6	4
20 mm	20	M22x1,5	22	8	15	18	G1/8	16	30	M8	30	8	12	8	10	8	7	6
25 mm	27	M22x1,5	22	8	17	18	G1/8	16	34	M10x1,25	30	8	12	10	10	8	6.5	8

Piston \varnothing	OF max.	WF $\pm 1,2$	XC ± 1
16 mm	10	47	133

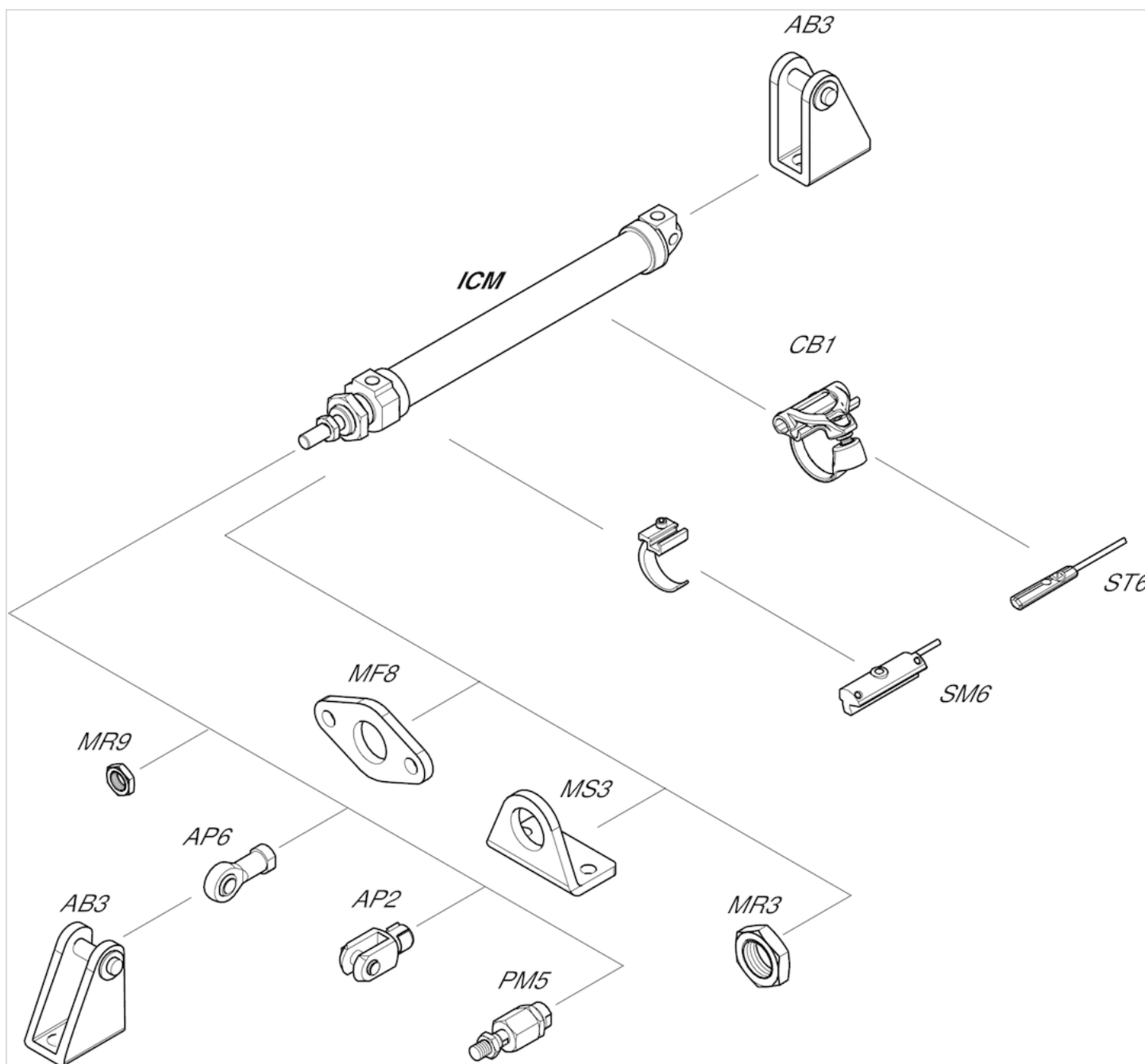
Piston Ø	OF max.	WF ±1,2	XC ±1
20 mm	10	49	148
25 mm	10	53	152

Weight [kg]

Part No.	Piston Ø	S	Weight kg
1326216020	16 mm	25	0,08 kg
1326220020	20 mm	25	0,14 kg
1326225020	25 mm	25	0,18 kg

Accessories overview

Overview drawing



NOTE:

This overview drawing is only for orientation to indicate where the various accessory parts can be fastened to the cylinder. The illustration has been simplified for this purpose. It is thus not possible to derive the dimensions from this overview.

Efficient pneumatic solutions, our program: cylinders and drives, valves and valve systems, air supply management



Visit us: [Emerson.com/Aventics](https://www.emerson.com/Aventics)

Your local contact: [Emerson.com/contactus](https://www.emerson.com/contactus)



Emerson.com



Facebook.com/EmersonAutomationSolutions



LinkedIn.com/company/Emerson-Automation-Solutions



Twitter.com/EMR_Automation

An example configuration is depicted on the title page. The delivered product may thus vary from that in the illustration. Subject to change. This Document, as well as the data, specifications and other information set forth in it, are the exclusive property of AVENTICS GmbH. It may not be reproduced or given to third parties without its consent. Only use the AVENTICS products shown in industrial applications. Read the product documentation completely and carefully before using the product. Observe the applicable regulations and laws of the respective country. When integrating the product into applications, note the system manufacturer's specifications for safe use of the product. The data specified only serve to describe the product. No statements concerning a certain condition or suitability for a certain application can be derived from our information. The information given does not release the user from the obligation of own judgement and verification. It must be remembered that the products are subject to a natural process of wear and aging.

The Emerson logo is a trademark and service mark of Emerson Electric Co. Brand logotype are registered trademarks of one of the Emerson family of companies. All other marks are the property of their respective owners. © 2021 Emerson Electric Co. All rights reserved.
2021-06



CONSIDER IT SOLVED™