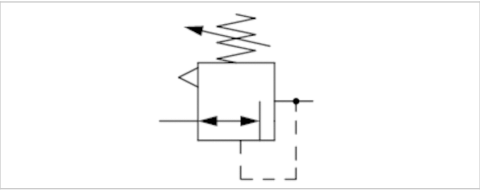


Pressure regulator, Series MU1-RGS

- G 1/8 G 1/4
- Qn = 450 l/min
- Standard pressure regulator
- Activation Mechanical



Parts	Pressure regulator
Mounting orientation	Any
Working pressure min./max.	0,5 ... 25 bar
Ambient temperature min./max.	-10 ... 60 °C
Medium temperature min./max.	-10 ... 60 °C
Medium	Compressed air Neutral gases
Regulator type	Diaphragm-type pressure regulator
Regulator function	with relieving air exhaust
Adjustment range min./max.	See table below
Pressure supply	single
Activation	Mechanical
Weight	See table below

Technical data

Part No.	Port	Flow	Adjustment range min./max.	Weight
		Qn		
0821302425	G 1/8	450 l/min	0,1 ... 3,5 bar	0,14 kg
0821302426	G 1/8	450 l/min	0,15 ... 7 bar	0,14 kg
0821302427	G 1/8	450 l/min	0,4 ... 10 bar	0,14 kg
0821302429	G 1/4	450 l/min	0,1 ... 3,5 bar	0,12 kg
0821302448	G 1/4	450 l/min	0,15 ... 7 bar	0,12 kg
0821302449	G 1/4	450 l/min	0,4 ... 10 bar	0,12 kg

Nominal flow Qn with secondary pressure p2 = 6 bar at Δp = 1 bar

Technical information

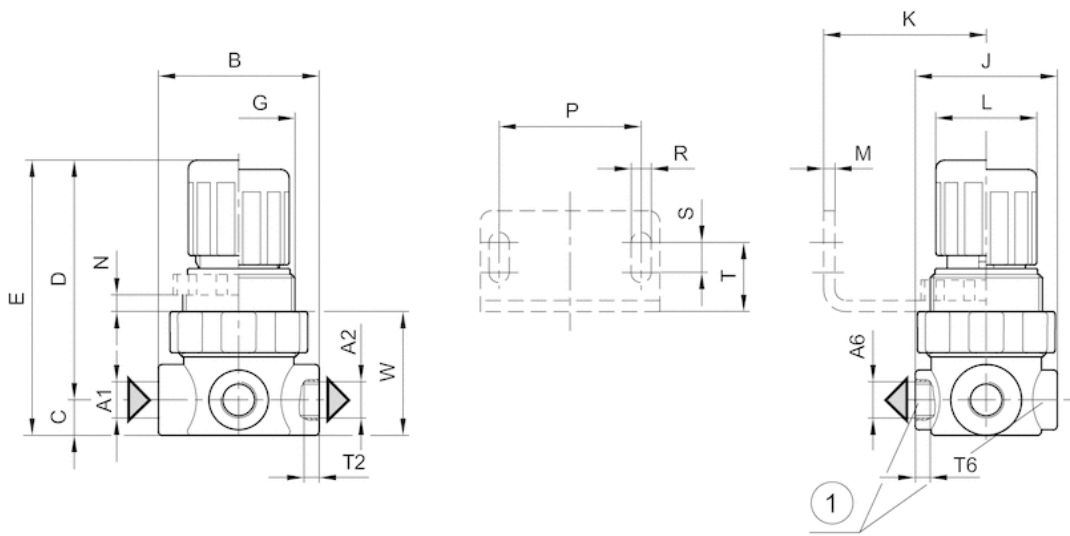
The pressure dew point must be at least 15 °C under ambient and medium temperature and may not exceed 3 °C .
Mounting with mounting bracket 1821331013

Technical information

Material	
Housing	Die cast zinc
Seals	Acrylonitrile butadiene rubber

Dimensions

Dimensions



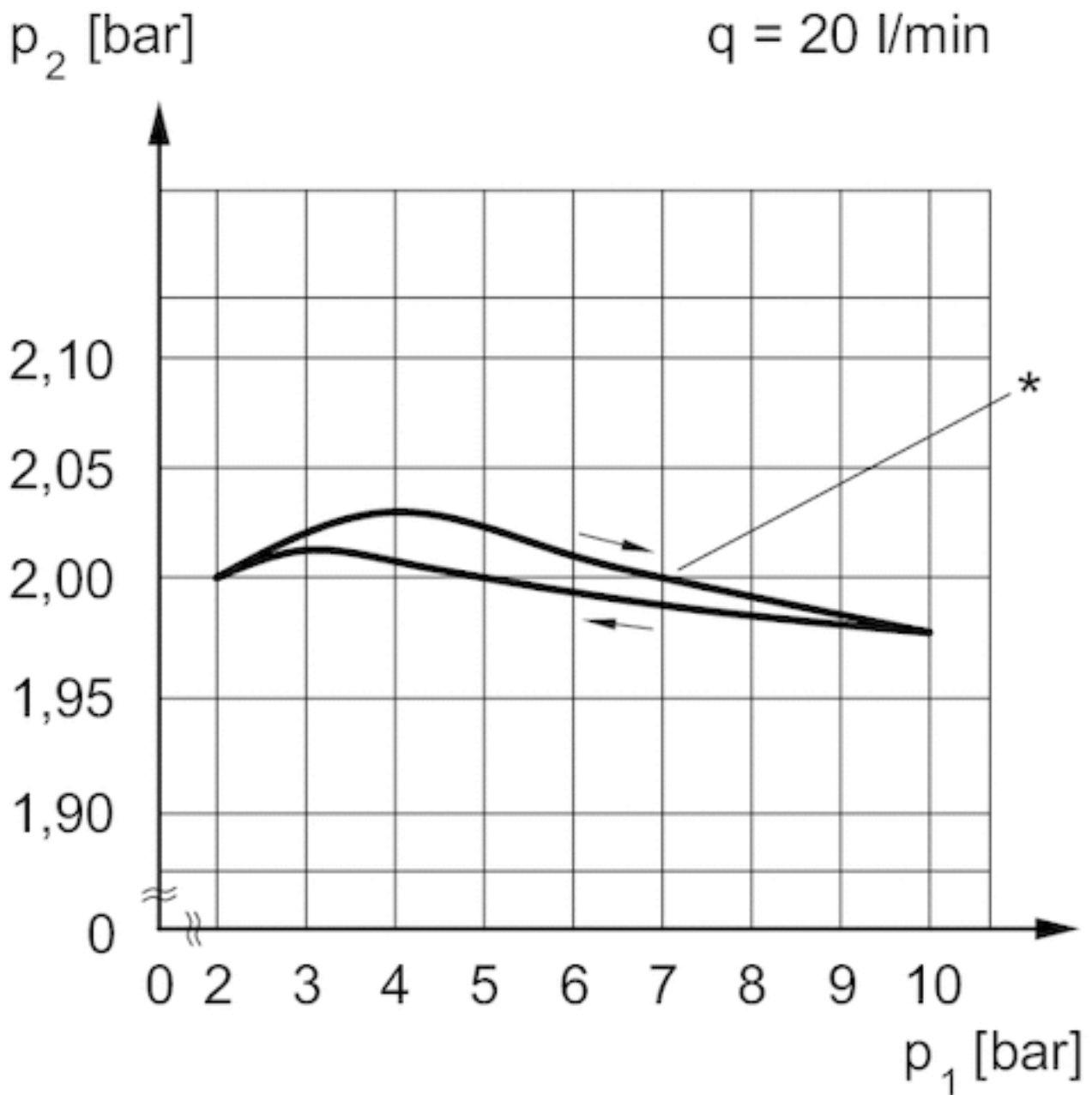
1) Pressure gauge connection

Dimensions

A1	A2	A6	B	C	D	E	G	J	K	L	M	N	P	R	S	T	T2	T6	W
G 1/8	G 1/8	G 1/8	43	9.5	61	70.5	M30x1,5	38	40	27	3	5	38	5.4	8	18.5	8	8	33
G 1/4	G 1/4	G 1/8	43	9.5	61	70.5	M30x1,5	38	40	27	3	5	38	5.4	8	18.5	8	8	33

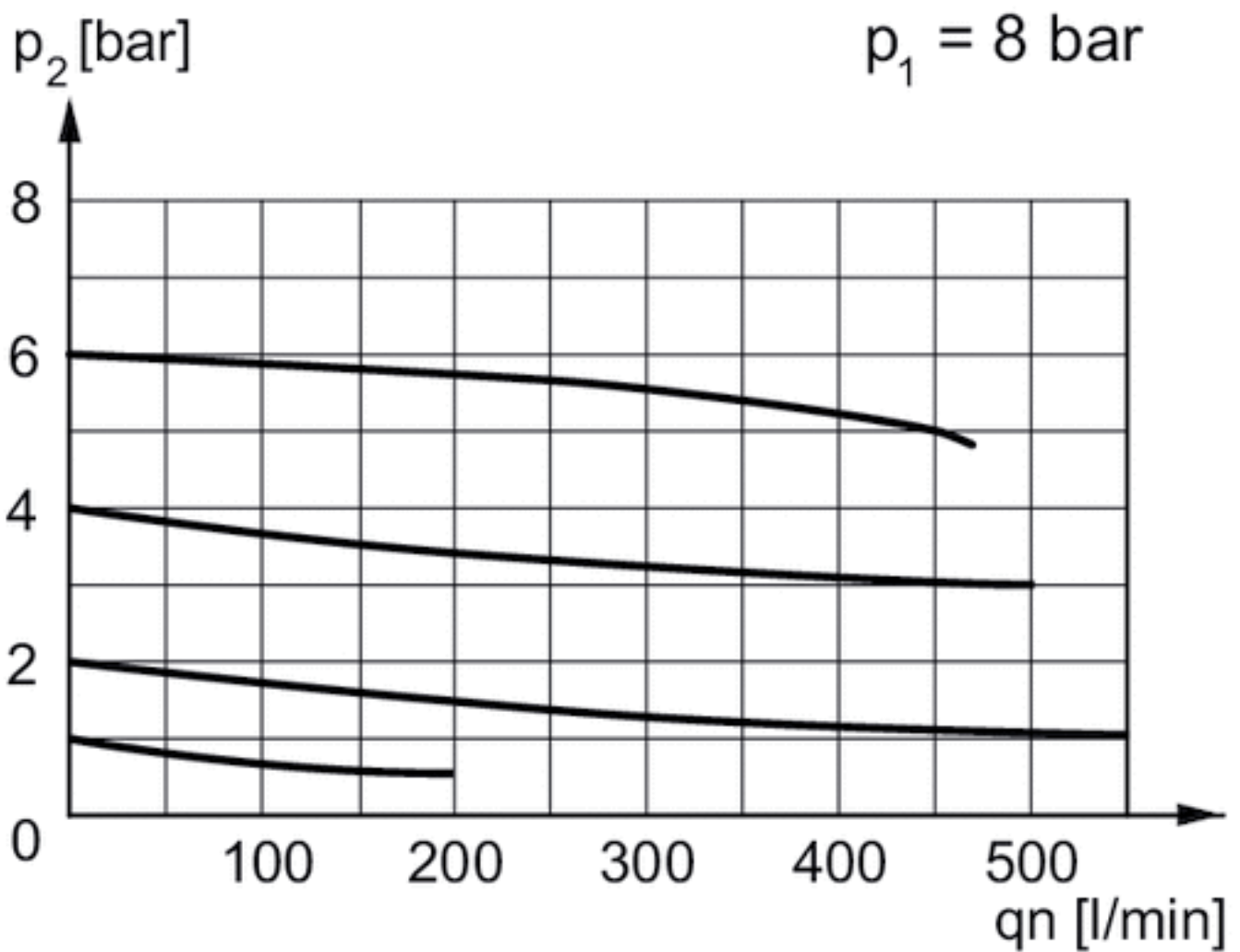
Diagrams

Pressure characteristics curve



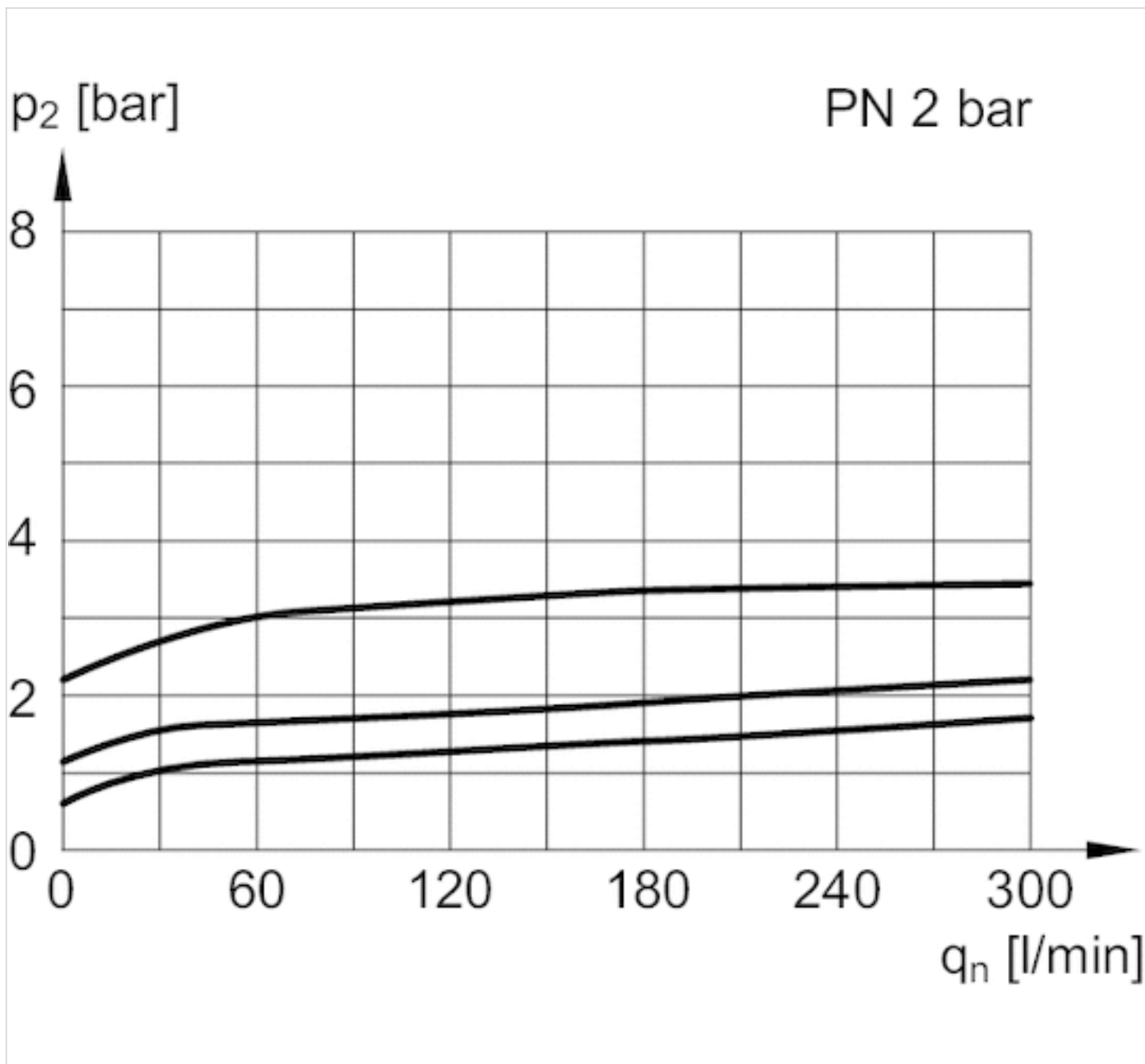
p_1 = working pressure
 p_2 = secondary pressure
 q = flow rate
* starting point

Flow rate characteristic



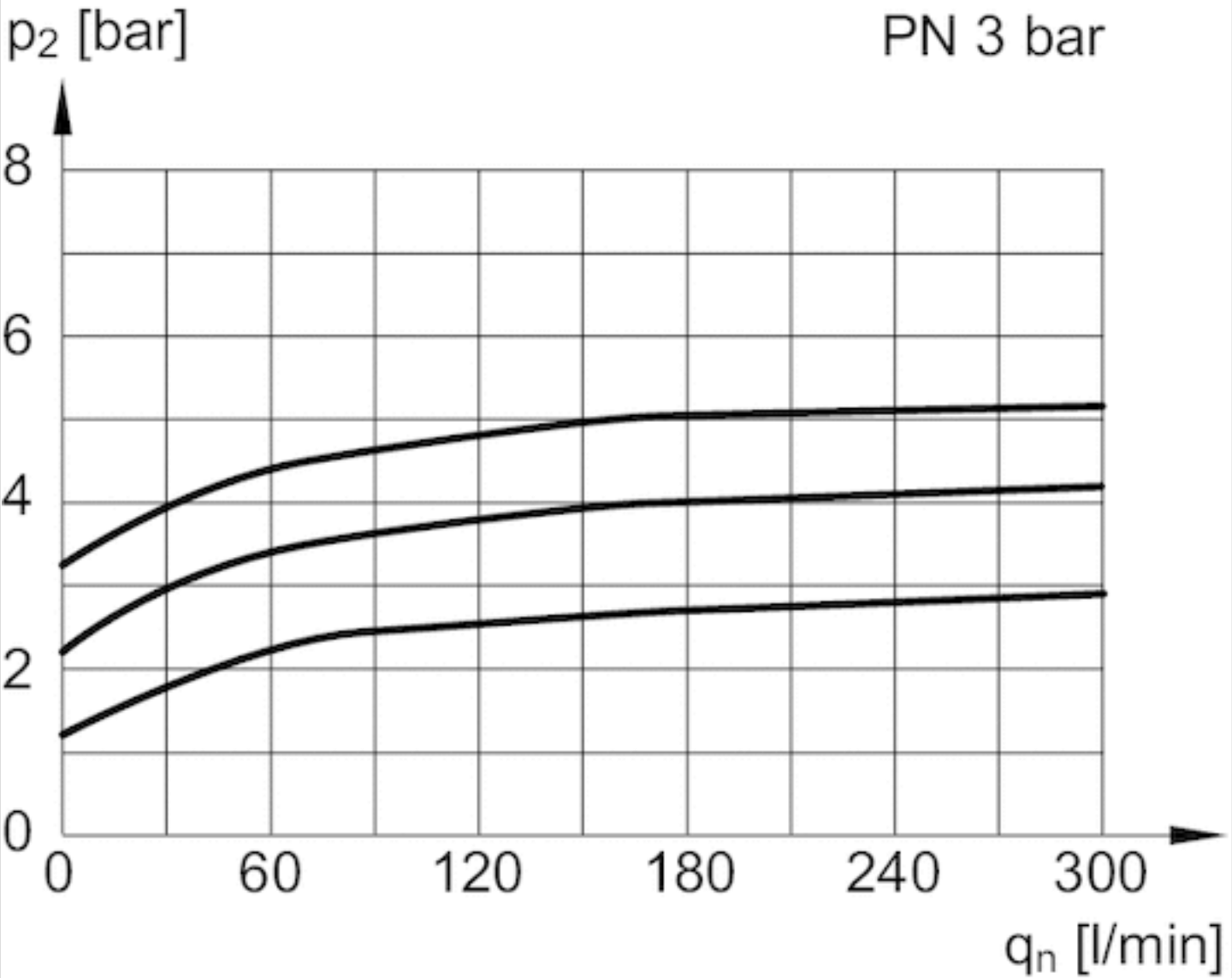
p_1 = Working pressure
 p_2 = Secondary pressure
 q_n = Nominal flow

Exhaust



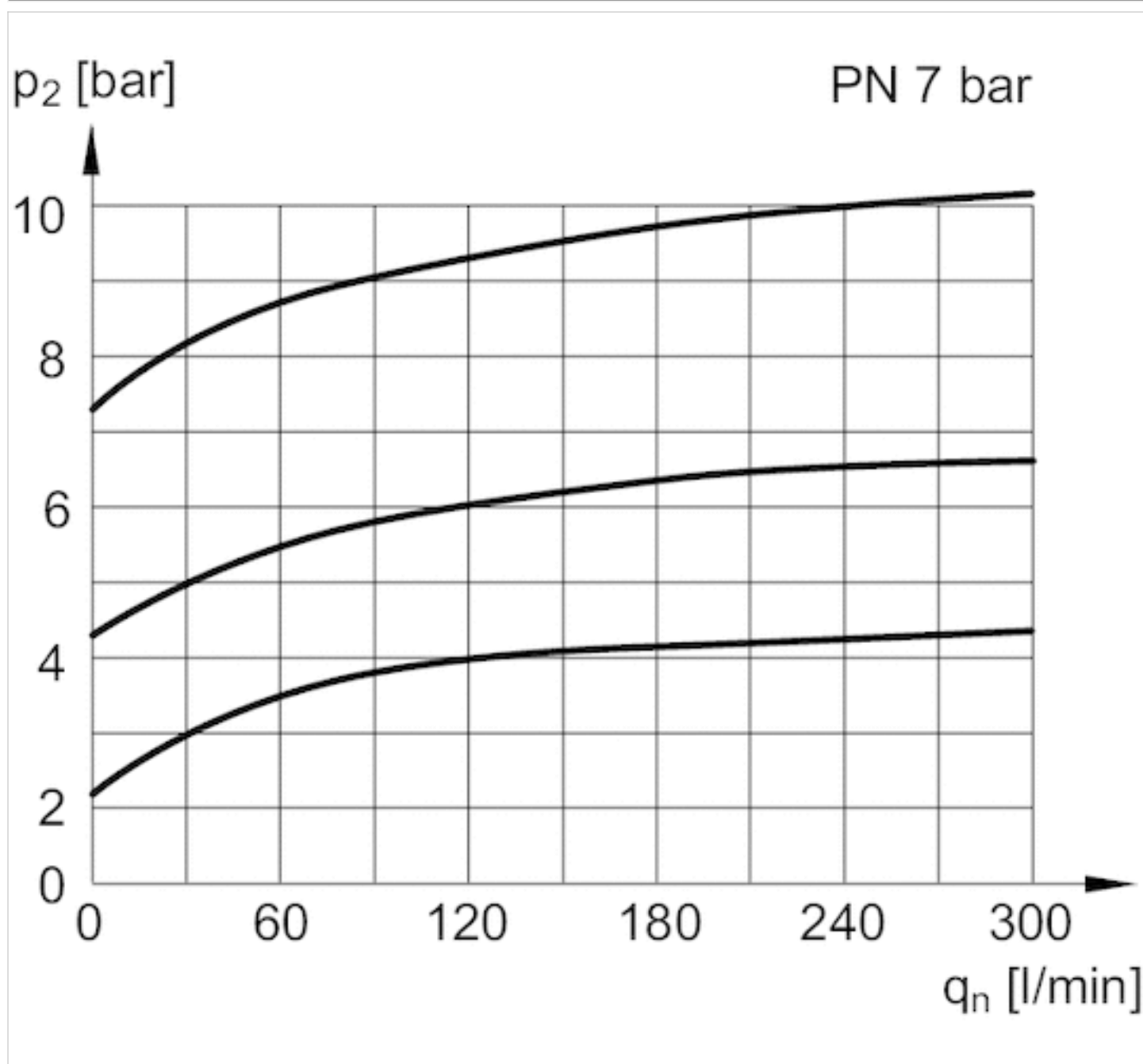
p_2 = secondary pressure
 q_n = nominal flow

Exhaust



p_2 = secondary pressure
 q_n = nominal flow

Exhaust



p_2 = secondary pressure

q_n = nominal flow

Efficient pneumatic solutions, our program: cylinders and drives, valves and valve systems, air supply management



Visit us: [Emerson.com/Aventics](https://emerson.com/aventics)

Your local contact: [Emerson.com/contactus](https://emerson.com/contactus)



Emerson.com



Facebook.com/EmersonAutomationSolutions



LinkedIn.com/company/Emerson-Automation-Solutions



Twitter.com/EMR_Automation

An example configuration is depicted on the title page. The delivered product may thus vary from that in the illustration. Subject to change. This Document, as well as the data, specifications and other information set forth in it, are the exclusive property of AVENTICS GmbH. It may not be reproduced or given to third parties without its consent. Only use the AVENTICS products shown in industrial applications. Read the product documentation completely and carefully before using the product. Observe the applicable regulations and laws of the respective country. When integrating the product into applications, note the system manufacturer's specifications for safe use of the product. The data specified only serve to describe the product. No statements concerning a certain condition or suitability for a certain application can be derived from our information. The information given does not release the user from the obligation of own judgement and verification. It must be remembered that the products are subject to a natural process of wear and aging.

The Emerson logo is a trademark and service mark of Emerson Electric Co. Brand logotype are registered trademarks of one of the Emerson family of companies. All other marks are the property of their respective owners. © 2020 Emerson Electric Co. All rights reserved.
2020-12



CONSIDER IT SOLVED™