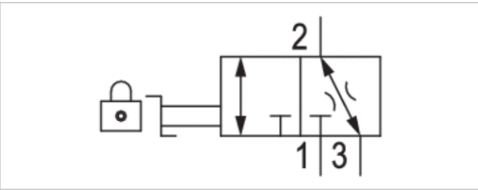


# 3/2-shut-off valve, mechanically operated, Series NL4-BAV

- Qn 1►2 = 11000 l/min
- Qn 2►3 = 110 l/min
- Compressed air connection output G 1/2 G 3/4
- suitable for ATEX



Type	Ball valve
Activation	Mechanical
Lock type	lockable
Sealing principle	metal/metal sealing
Certificates	suitable for ATEX
Working pressure min./max.	0 ... 16 bar
Ambient temperature min./max.	-10 ... 60 °C
Medium temperature min./max.	-10 ... 60 °C
Medium	Compressed air Neutral gases
Weight	0,82 kg
	The delivered product may vary from that in the illustration.



## Technical data

Part No.	Actuating element	Version	Compressed air connection type	Compressed air connection Input
0821300911	rotary switch	3/2	Internal thread	G 1/2
0821300913	rotary switch	3/2	Internal thread	G 3/4
0821300982	Rotary knob	3/2	Internal thread	G 1/2
0821300983	Rotary knob	3/2	Internal thread	G 3/4

Part No.	Compressed air connection Output	Compressed air connection Exhaust	Flow	Flow
			Qn 1 ► 2	Qn 2 ► 3
0821300911	G 1/2	G 1/2	11000 l/min	110 l/min
0821300913	G 3/4	G 1/2	11000 l/min	110 l/min
0821300982	G 1/2	G 1/2	11000 l/min	110 l/min
0821300983	G 3/4	G 1/2	11000 l/min	110 l/min

Part No.	Lock type	Fig.
0821300911	for padlocks	Fig. 1
0821300913	for padlocks	Fig. 1
0821300982	with key	Fig. 2
0821300983	with key	Fig. 2

Nominal flow Qn with secondary pressure p2 = 6 bar at Δp = 1 bar

Suitable for use in Ex zones 1, 2, 21, 22.

Technical information

The pressure dew point must be at least 15 °C under ambient and medium temperature and may not exceed 3 °C .

Suitable for use in Ex zones 1, 2, 21, 22.

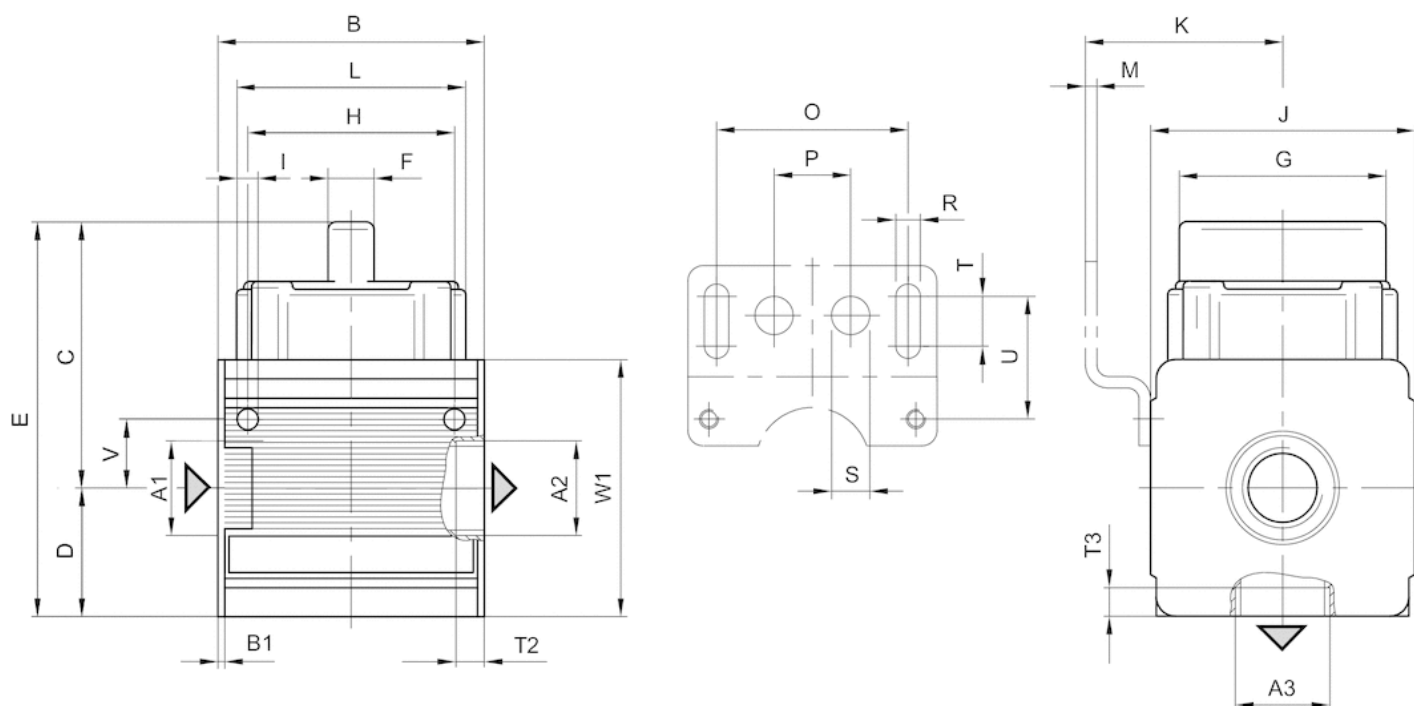
A change in the flow direction (from air supply on the left to air supply on the right) occurs by rotating installation by 180° about the vertical axis. Please see the operating instructions for further details.

Technical information

Material	
Housing	Die cast zinc
Front plate	Acrylonitrile butadiene styrene
Seals	Acrylonitrile butadiene rubber
Actuating element	Polyoxymethylene

## Dimensions

Fig. 1



A1 = input

A2 = output

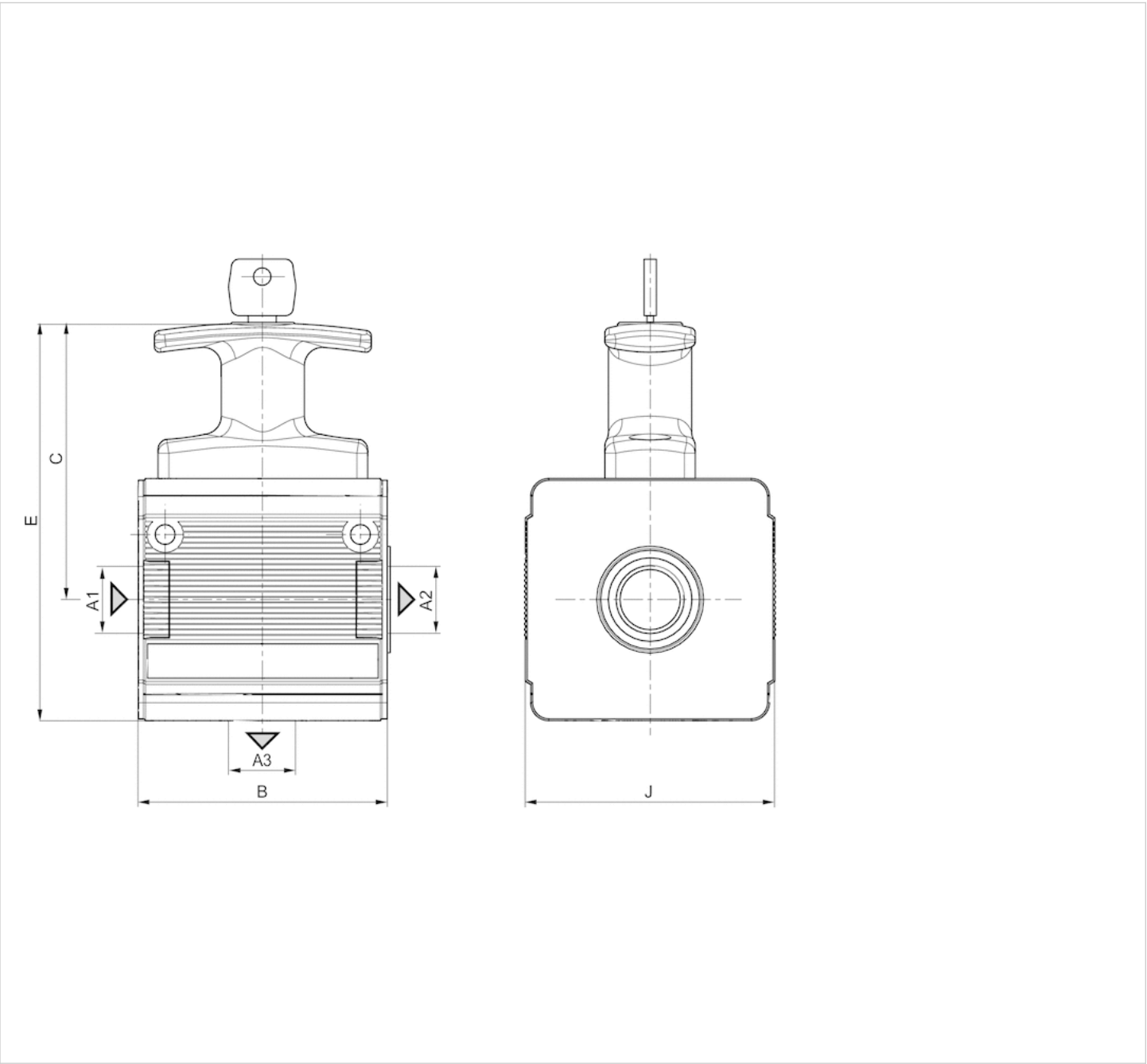
A3 = ventilation port

## Dimensions in mm

A2	A3	B	B1	C	D	E	F	H	G	I	J	K	L	M	O	P	R	S	T	T2	T3	U	V	W1
G 1/2	G 1/2	69.6	1.8	69.5	33.5	103	12	54	60	5.5	69	54.5	60	3	38	20	6.4	10	13	10.5	10.5	33	18	67
G 3/4	G 1/2	69.6	1.8	69.5	33.5	103	12	54	60	5.5	69	54.5	60	3	50	20	6.4	10	13	10.5	10.5	33	18	67

Dimensions

Fig. 2



A1 = input  
A2 = output

Dimensions in mm

A2	B	C	E	J
G 1/2	69.6	78	111,5	69
G 3/4	69.6	78	111,5	69

# Efficient pneumatic solutions, our program: cylinders and drives, valves and valve systems, air supply management



Visit us: [Emerson.com/Aventics](https://emerson.com/aventics)

Your local contact: [Emerson.com/contactus](https://emerson.com/contactus)



Emerson.com



Facebook.com/EmersonAutomationSolutions



LinkedIn.com/company/Emerson-Automation-Solutions



Twitter.com/EMR\_Automation

An example configuration is depicted on the title page. The delivered product may thus vary from that in the illustration. Subject to change. This Document, as well as the data, specifications and other information set forth in it, are the exclusive property of AVENTICS GmbH. It may not be reproduced or given to third parties without its consent. Only use the AVENTICS products shown in industrial applications. Read the product documentation completely and carefully before using the product. Observe the applicable regulations and laws of the respective country. When integrating the product into applications, note the system manufacturer's specifications for safe use of the product. The data specified only serve to describe the product. No statements concerning a certain condition or suitability for a certain application can be derived from our information. The information given does not release the user from the obligation of own judgement and verification. It must be remembered that the products are subject to a natural process of wear and aging.

The Emerson logo is a trademark and service mark of Emerson Electric Co. Brand logotype are registered trademarks of one of the Emerson family of companies. All other marks are the property of their respective owners. © 2020 Emerson Electric Co. All rights reserved.  
2020-12



## CONSIDER IT SOLVED™