

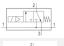


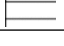
3/2-directional valve, electrically operated, Series NL1-SOV-...-DS

- Compressed air connection G 1/4
- Pipe connection
- Electrical connection: Plug, ISO 6952, form B
- with continuous pressure supply



Type	Poppet valve, Can be assembled into blocks
Parts	3/2-directional valve, electrically operated
Nominal flow 1 ▶ 2	2000 l/min
Nominal flow 2 ▶ 3	800 l/min
Working pressure min./max.	2,5 ... 10 bar
Medium	Compressed air Neutral gases
Medium temperature min./max.	-10 ... 60 °C
Ambient temperature min./max.	-10 ... 60 °C
Pilot	Internal
Sealing principle	Soft sealing
Max. particle size	5 µm
Protection class acc. to DIN EN 61140 with plug	IP65
Duty cycle	100 %
Weight	See table below

Technical data

Part No.			Compressed air connection input	Compressed air connection output	Exhaust
0821300673		—	G 1/4	G 1/4	G 1/4
0821300675		—	G 1/4	G 1/4	G 1/4
0821300676			G 1/4	G 1/4	G 1/4

Part No.	Operational voltage	Power consumption	Manual override
		DC	
0821300673	24 V	4,8 W	-
0821300675	-	-	-
0821300676	-	-	with detent

Part No.	Electrical connection	basic valve with electrical connector
	Pilot valve	
0821300673	Plug, ISO 6952, form B	-
0821300675	Plug, ISO 6952, form B	pilot valve without coil
0821300676	Plug, ISO 6952, form B	pilot valve without coil

Part No.	Reverse polarity protection	Weight
0821300673	Protected against polarity reversal	0,45 kg
0821300675	Protected against polarity reversal	0,42 kg
0821300676	Protected against polarity reversal	0,42 kg

Nominal flow Qn with secondary pressure p2 = 6 bar at Δp = 1 bar

Technical information

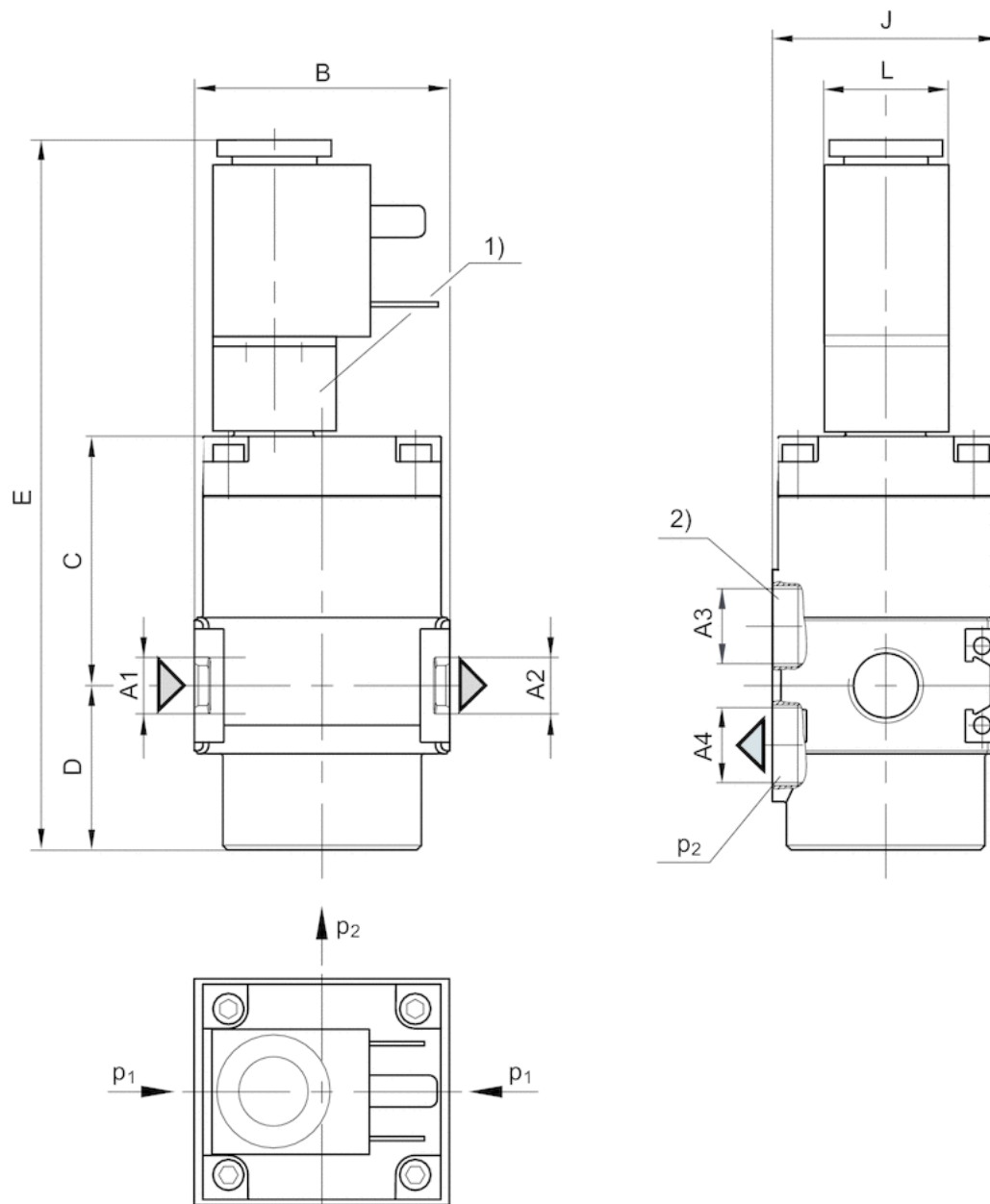
The pressure dew point must be at least 15 °C under ambient and medium temperature and may not exceed 3 °C .

Technical information

Material	
Housing	Die cast zinc
Seals	Acrylonitrile butadiene styrene

Dimensions

Dimensions



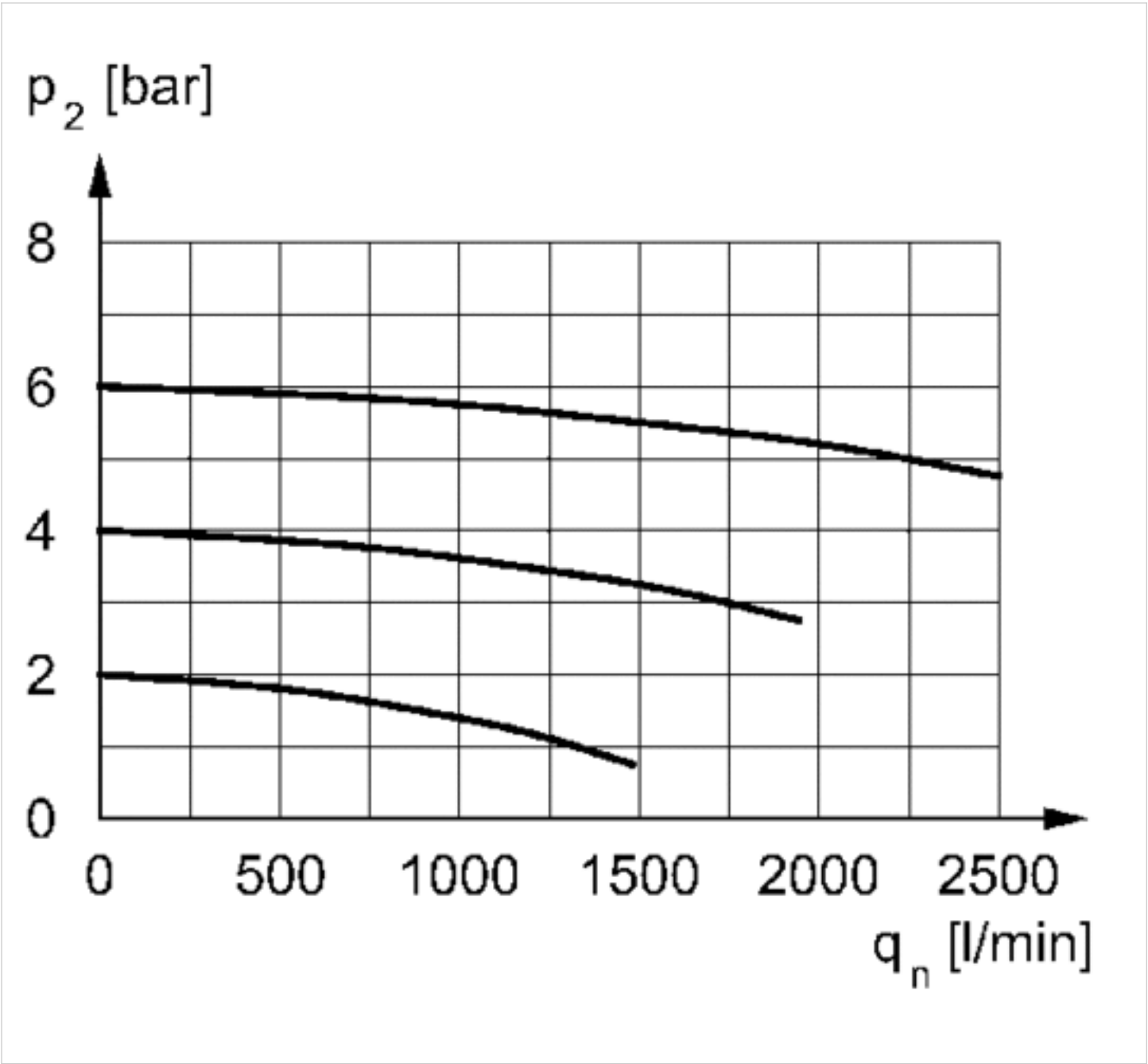
- A1 = input
- A2 = output
- A3 = ventilation port
- A4 = output
- p1 = working pressure
- p2 = secondary pressure
- 1) electrically operated
- 2) Port 3 (Exhaust)

Dimensions in mm

A1	A2	A3	A4	A6	B	C	D	E	J	L
G 1/4	G 1/4	G 1/4	G 1/4	G 1/4	45	44.5	29	124.5	40	22

Diagrams

Flow rate characteristic



p_2 = secondary pressure
 q_n = nominal flow

Efficient pneumatic solutions, our program: cylinders and drives, valves and valve systems, air supply management



Visit us: [Emerson.com/Aventics](https://www.emerson.com/Aventics)

Your local contact: [Emerson.com/contactus](https://www.emerson.com/contactus)



Emerson.com



Facebook.com/EmersonAutomationSolutions



LinkedIn.com/company/Emerson-Automation-Solutions



Twitter.com/EMR_Automation

An example configuration is depicted on the title page. The delivered product may thus vary from that in the illustration. Subject to change. This Document, as well as the data, specifications and other information set forth in it, are the exclusive property of AVENTICS GmbH. It may not be reproduced or given to third parties without its consent. Only use the AVENTICS products shown in industrial applications. Read the product documentation completely and carefully before using the product. Observe the applicable regulations and laws of the respective country. When integrating the product into applications, note the system manufacturer's specifications for safe use of the product. The data specified only serve to describe the product. No statements concerning a certain condition or suitability for a certain application can be derived from our information. The information given does not release the user from the obligation of own judgement and verification. It must be remembered that the products are subject to a natural process of wear and aging.

The Emerson logo is a trademark and service mark of Emerson Electric Co. Brand logotype are registered trademarks of one of the Emerson family of companies. All other marks are the property of their respective owners. © 2020 Emerson Electric Co. All rights reserved.
2020-12



CONSIDER IT SOLVED™