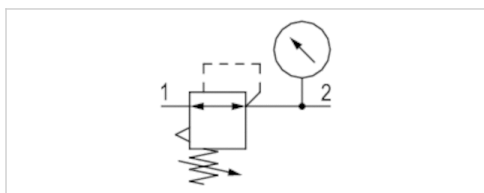


# Pressure regulator, Series NL1-RGS

- G 1/8 G 1/4
- $Q_n = 1350$  l/min
- Pressure regulator, high flow rate
- Activation Mechanical
- with pressure gauge in hand wheel
- suitable for ATEX



|                               |  |
|-------------------------------|--|
| Parts                         | Pressure regulator   |
| Mounting orientation          | Any  |
| Certificates                  | suitable for ATEX  |
| Working pressure min./max.    | 0,5 ... 16 bar   |
| Ambient temperature min./max. | -10 ... 60 °C  |
| Medium temperature min./max.  | -10 ... 60 °C  |
| Medium                        | Compressed air Neutral gases                                   |
| Regulator type                | Diaphragm-type pressure regulator Can be assembled into blocks |
| Regulator function            | with relieving air exhaust                                     |
| Adjustment range min./max.    | See table below  |
| Pressure supply               | single   |
| Activation                    | Mechanical   |
| Weight                        | 0,35 kg  |

## Technical data

| Part No.   | Port  | Flow       | Adjustment range min./max. | Pressure gauge                    |
|------------|-------|------------|----------------------------|-----------------------------------|
|            |       | $Q_n$      |                            |                                   |
| 0821300663 | G 1/8 | 1350 l/min | 0,1 ... 3 bar              | with pressure gauge in hand wheel |
| 0821300664 | G 1/8 | 1350 l/min | 0,2 ... 6 bar              | with pressure gauge in hand wheel |
| 0821300665 | G 1/8 | 1350 l/min | 0,5 ... 10 bar             | with pressure gauge in hand wheel |
| 0821300666 | G 1/4 | 1350 l/min | 0,1 ... 3 bar              | with pressure gauge in hand wheel |
| 0821300667 | G 1/4 | 1350 l/min | 0,2 ... 6 bar              | with pressure gauge in hand wheel |
| 0821300668 | G 1/4 | 1350 l/min | 0,5 ... 10 bar             | with pressure gauge in hand wheel |

Panel nut included in scope of delivery

Nominal flow  $Q_n$  with secondary pressure  $p_2 = 6$  bar at  $\Delta p = 1$  bar, Suitable for use in Ex zones 1, 2, 21, 22.

## Technical information

The pressure dew point must be at least 15 °C under ambient and medium temperature and may not exceed 3 °C .

Suitable for use in Ex zones 1, 2, 21, 22.

Relieving exhaust ( $\leq 0.3$  bar over set pressure).

With rear exhaust ( $> 3$  bar ).

A change in the flow direction (from air supply on the left to air supply on the right) occurs by rotating installation by 180° about the vertical axis. Please see the operating instructions for further details.

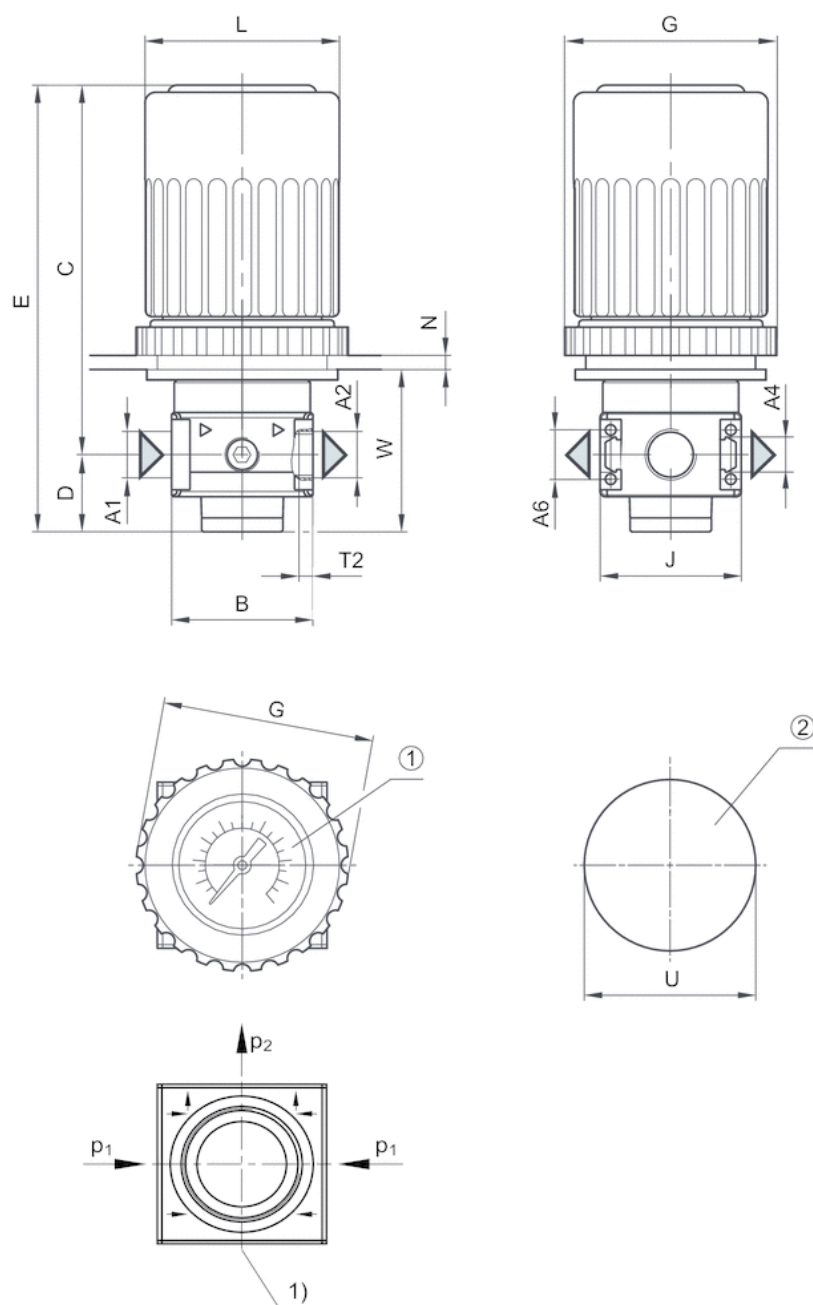
Recommended pre-filtering 5  $\mu$ m

## Technical information

|          |                                |
|----------|--------------------------------|
| Material |                                |
| Housing  | Die cast zinc                  |
| Seals    | Acrylonitrile butadiene rubber |

## Dimensions

### Dimensions



A1 = input

A2 = output

A4 = output

A6 = output

1) pressure gauge  $\varnothing 40$

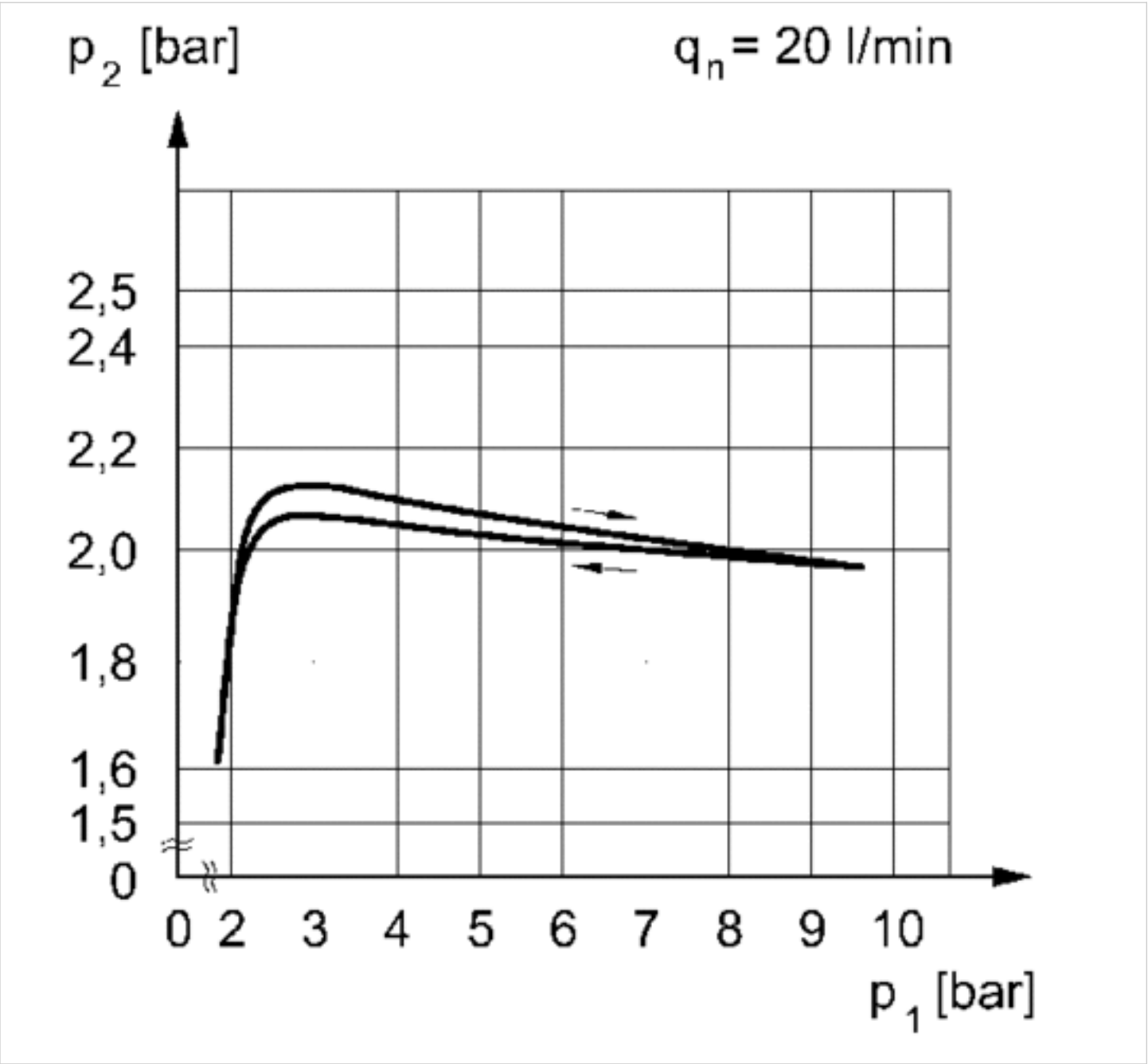
2) opening for control panel assembly

Dimensions in mm

| A1    | A2    | A4    | A6    | B  | C   | D  | E   | G  | J  | L  | N | T2 | U    | W  |
|-------|-------|-------|-------|----|-----|----|-----|----|----|----|---|----|------|----|
| G 1/8 | G 1/8 | G 1/8 | G 1/8 | 40 | 102 | 22 | 124 | 60 | 40 | 54 | 4 | 8  | 48.5 | 43 |
| G 1/4 | G 1/4 | G 1/8 | G 1/8 | 40 | 102 | 22 | 124 | 60 | 40 | 54 | 4 | 8  | 48.5 | 43 |

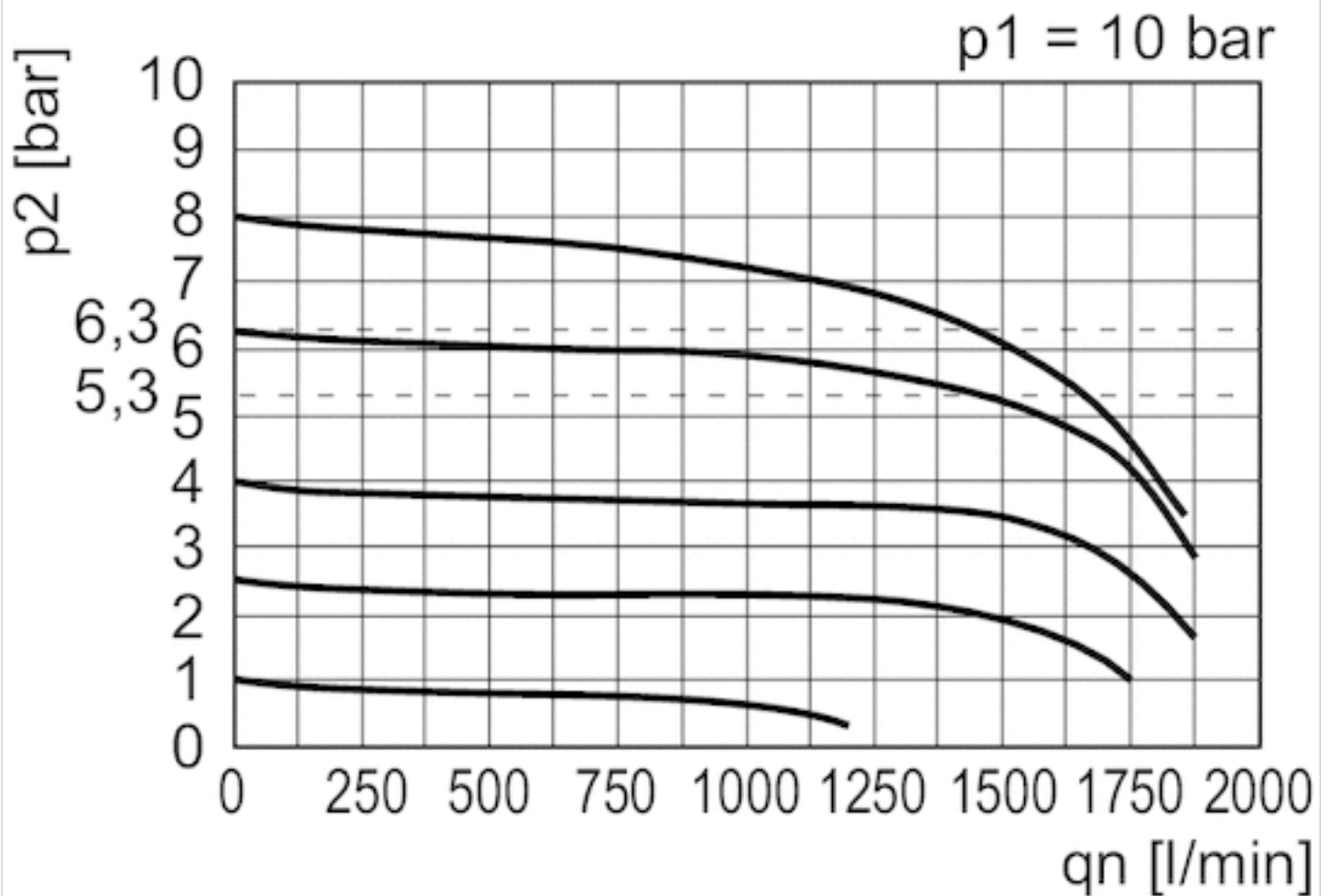
Diagrams

Pressure characteristics curve



p1 = Working pressure  
 p2 = Secondary pressure  
 qn = Nominal flow

## Flow rate characteristic (setting range p2: 0.5 - 10 bar)



p1 = Working pressure  
p2 = Secondary pressure  
qn = Nominal flow

# Efficient pneumatic solutions, our program: cylinders and drives, valves and valve systems, air supply management



Visit us: [Emerson.com/Aventics](https://www.emerson.com/Aventics)

Your local contact: [Emerson.com/contactus](https://www.emerson.com/contactus)



Emerson.com



Facebook.com/EmersonAutomationSolutions



LinkedIn.com/company/Emerson-Automation-Solutions



Twitter.com/EMR\_Automation

An example configuration is depicted on the title page. The delivered product may thus vary from that in the illustration. Subject to change. This Document, as well as the data, specifications and other information set forth in it, are the exclusive property of AVENTICS GmbH. It may not be reproduced or given to third parties without its consent. Only use the AVENTICS products shown in industrial applications. Read the product documentation completely and carefully before using the product. Observe the applicable regulations and laws of the respective country. When integrating the product into applications, note the system manufacturer's specifications for safe use of the product. The data specified only serve to describe the product. No statements concerning a certain condition or suitability for a certain application can be derived from our information. The information given does not release the user from the obligation of own judgement and verification. It must be remembered that the products are subject to a natural process of wear and aging.

The Emerson logo is a trademark and service mark of Emerson Electric Co. Brand logotype are registered trademarks of one of the Emerson family of companies. All other marks are the property of their respective owners. © 2020 Emerson Electric Co. All rights reserved.  
2020-12



## CONSIDER IT SOLVED™