

3/2-directional valve, Series ST

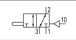
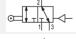
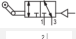

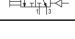
- with air return
- $Q_n = 280 \text{ l/min}$
- Compressed air connection output G 1/8
- single solenoid
- Pipe connection



Type	Spool valve
Activation	Mechanical
Lock type	not lockable
Switching principle	3/2
Sealing principle	metal/metal sealing
Nominal flow Q_n	280 l/min
Working pressure min./max.	-0,95 ... 10 bar
Control pressure min./max.	2 ... 10 bar
Ambient temperature min./max.	-15 ... 80 °C
Medium temperature min./max.	-15 ... 80 °C
Medium	Compressed air
Max. particle size	5 µm
Oil content of compressed air	5 ... 25 mg/m³
Mounting screw	M4 with hexagon socket
Mounting screw tightening torque	2,5 Nm
Weight	See table below

An example configuration is illustrated.
The delivered product may thus deviate from the illustration.

Technical data

Part No.		Actuating element	Compressed air connection type	Compressed air connection Input
0820402008		Plunger	Internal thread	G 1/8
0820402009		Roller	Internal thread	G 1/8
0820402010		Roller lever, one-way trip	Internal thread	G 1/8
0820402011		Push button	Internal thread	G 1/8
R422002212		panel installation	Internal thread	G 1/8

Part No.	Compressed air connection Output	Compressed air connection Exhaust	Operating force	
			min.	
0820402008	G 1/8	G 1/8	5 N	
0820402009	G 1/8	G 1/8	3 N	
0820402010	G 1/8	G 1/8	3 N	
0820402011	G 1/8	G 1/8	3 N	
R422002212	G 1/8	G 1/8	-	

Part No.	Material actuating control	Weight	Fig.	
0820402008	Stainless steel	0,17 kg	Fig. 1	1)
0820402009	Polyoxymethylene	0,17 kg	Fig. 2	1)
0820402010	Polyoxymethylene	0,18 kg	Fig. 3	1)

Part No.	Material actuating control	Weight	Fig.	
0820402011	Polyamide	0,18 kg	Fig. 4	1)
R422002212	Polyoxymethylene	0,18 kg	Fig. 5	2)

Nominal flow Qn at 6 bar and Δp = 1 bar

- 1) ,
- 2) Please order control button separately., Cannot be combined with mushroom button with detent and rotary release R412012741

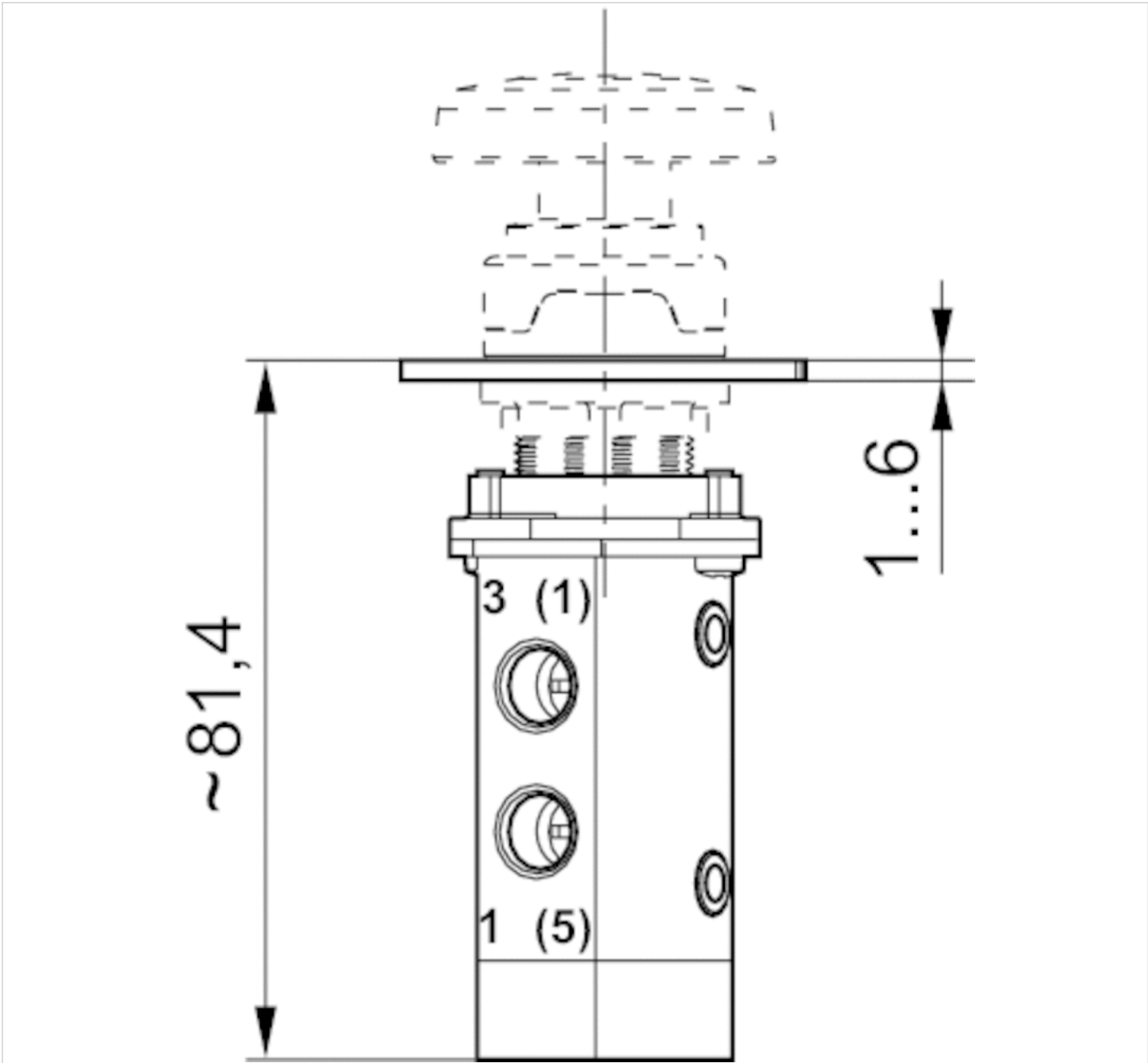
Technical information

Notice: This product may only be operated with oiled compressed air.

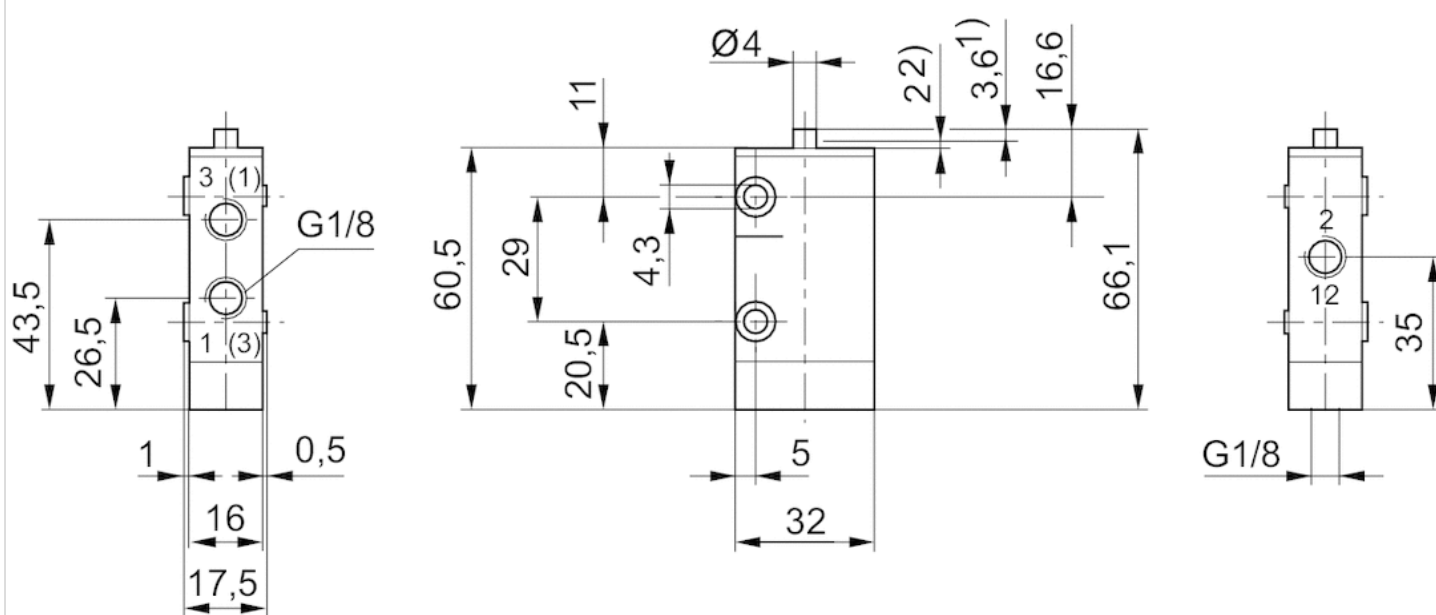
Technical information

Material	
Housing	Stainless steel, hardened
Seals	Acrylonitrile butadiene rubber
Actuating element	Stainless steel Polyoxymethylene Polyamide
Front cover	Steel, galvanized Steel
Threaded bushing	Brass

Dimensions

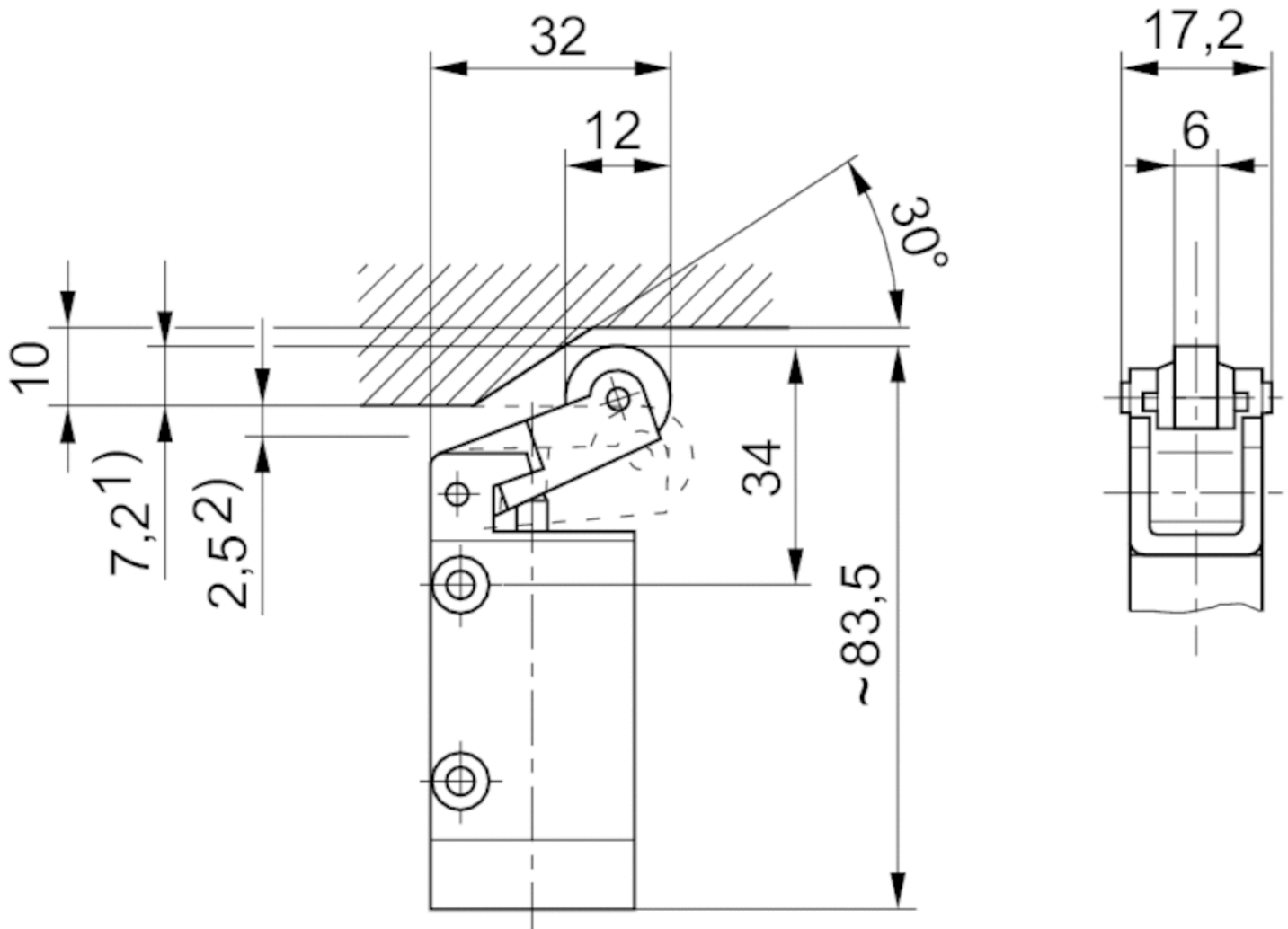


Dimensions, Fig. 1, Basic valve



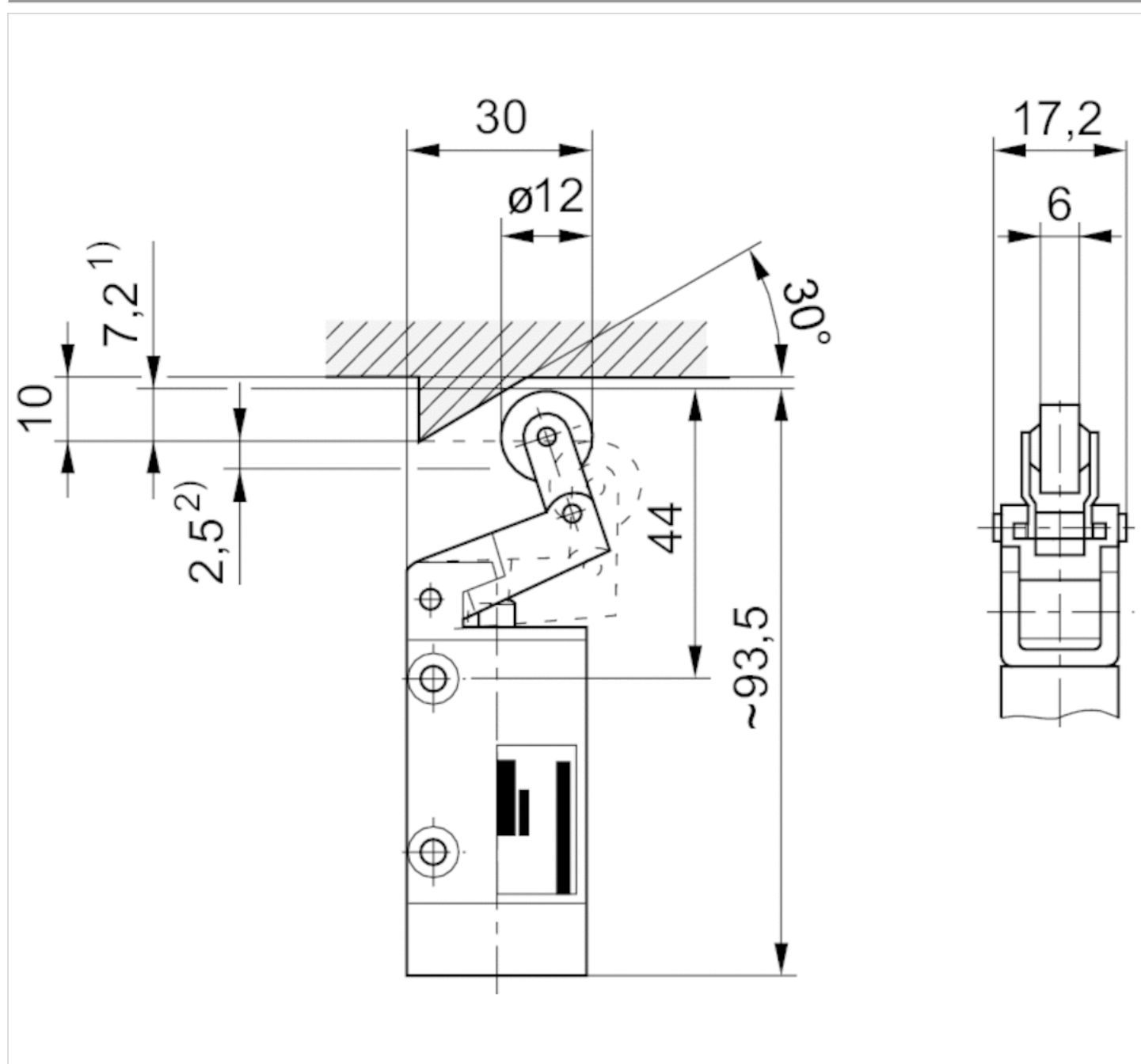
1) Actuating stroke 2) overstroke
 connection via 2 through-holes in housing
 Dimensions of basic valve apply to all types of actuation.

Dimensions, Fig. 2



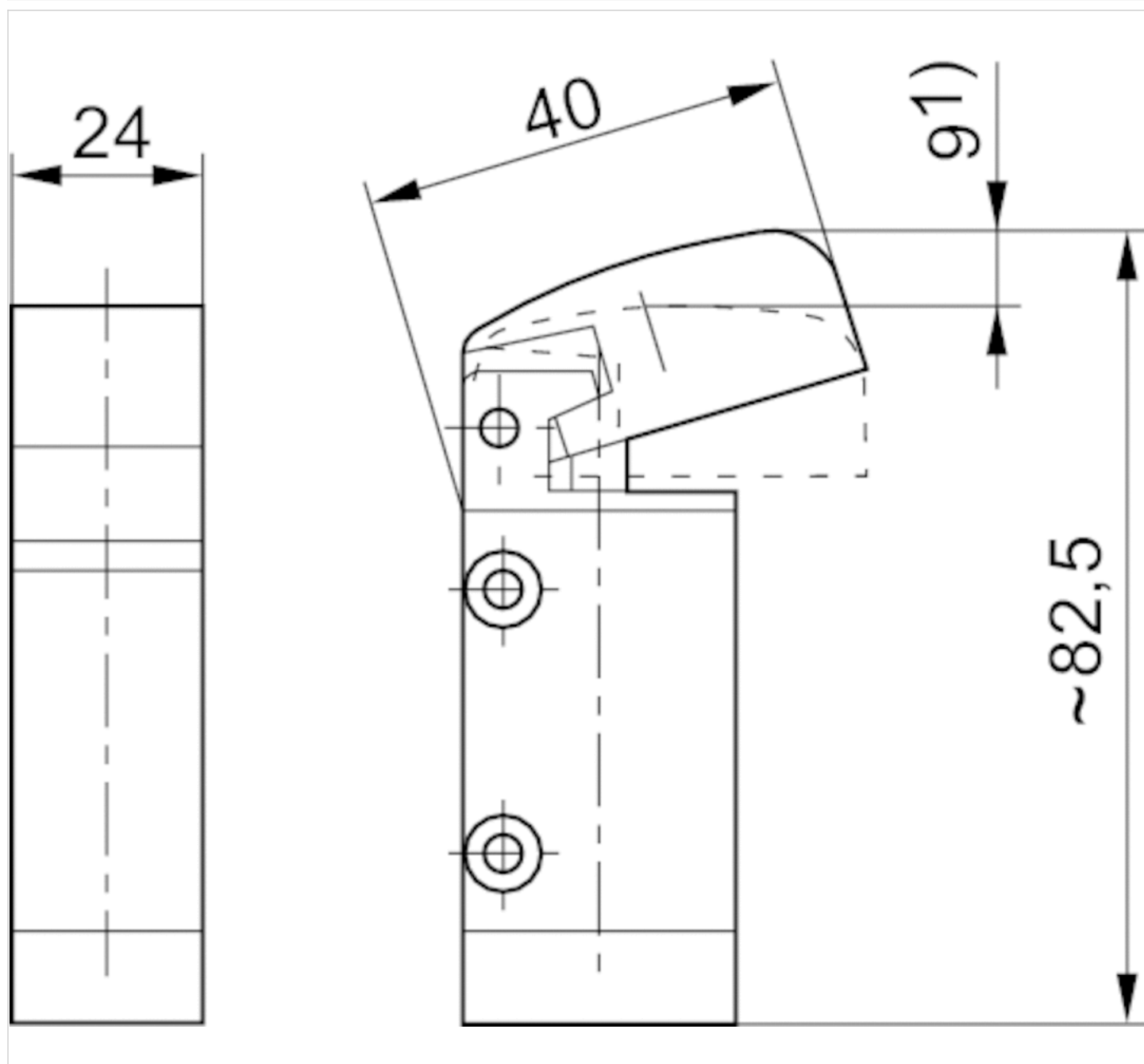
1) Actuating stroke 2) overstroke
connection via 2 through-holes in housing

Dimensions, Fig. 3



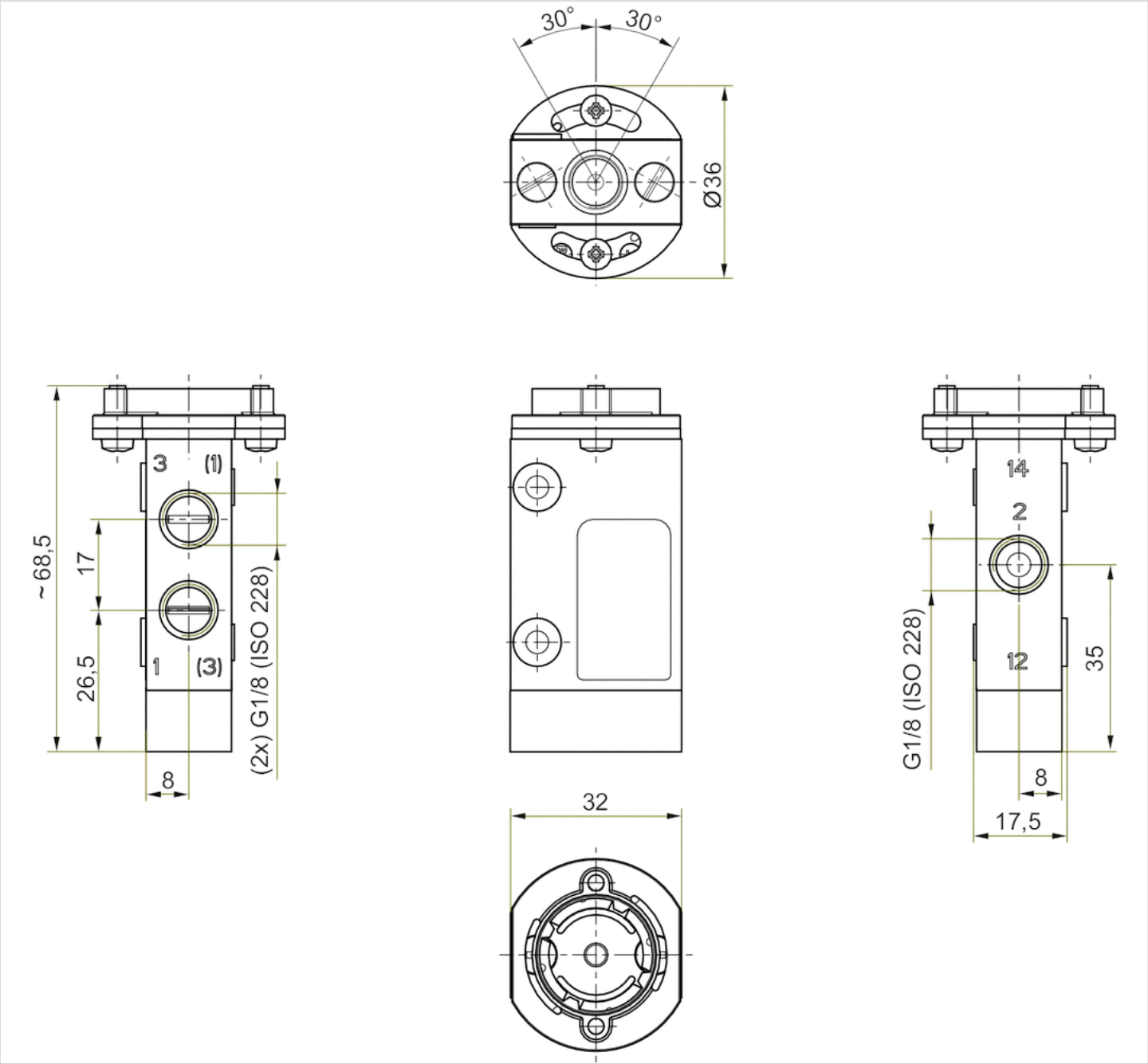
1) Actuating stroke 2) overstroke
connection via 2 through-holes in housing

Dimensions, Fig. 4



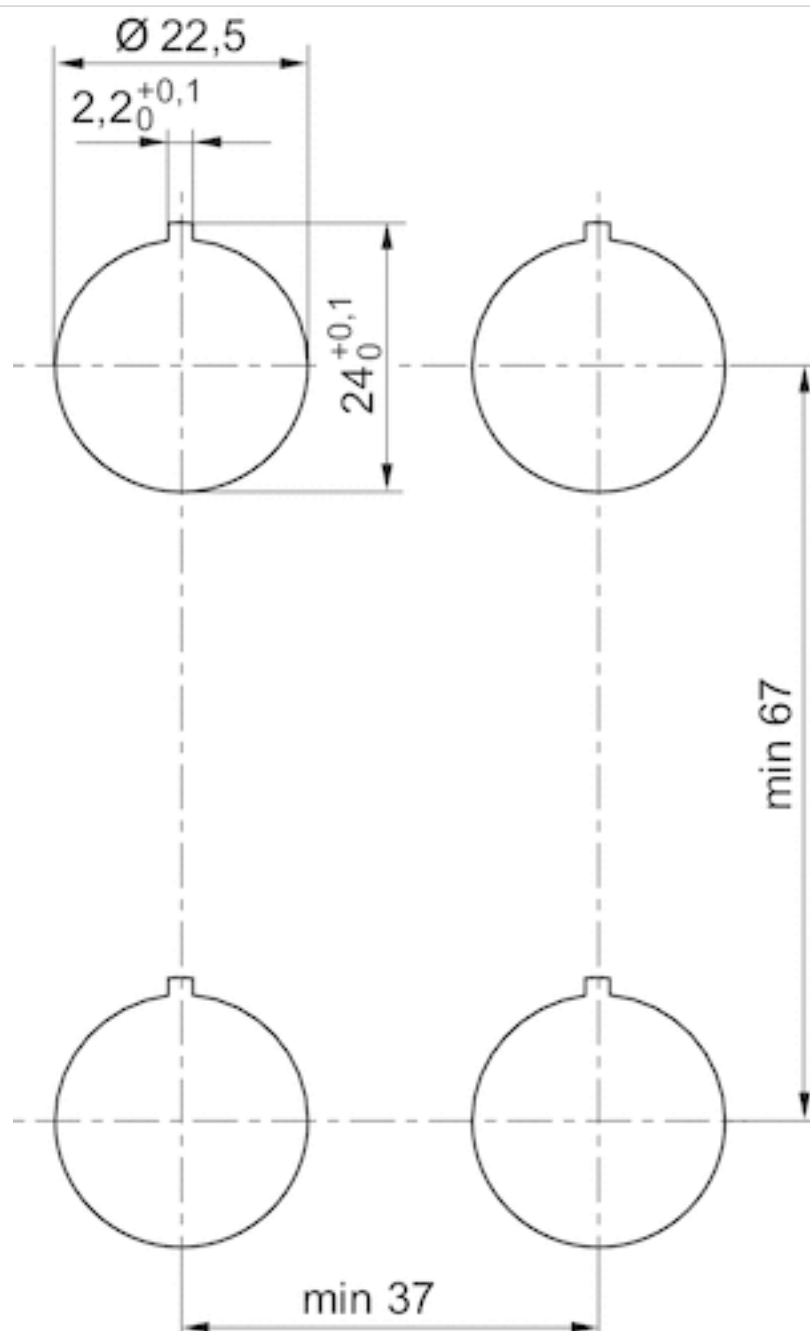
1) actuating stroke
Mounting via 2 through-holes in housing

Dimensions, Fig. 5



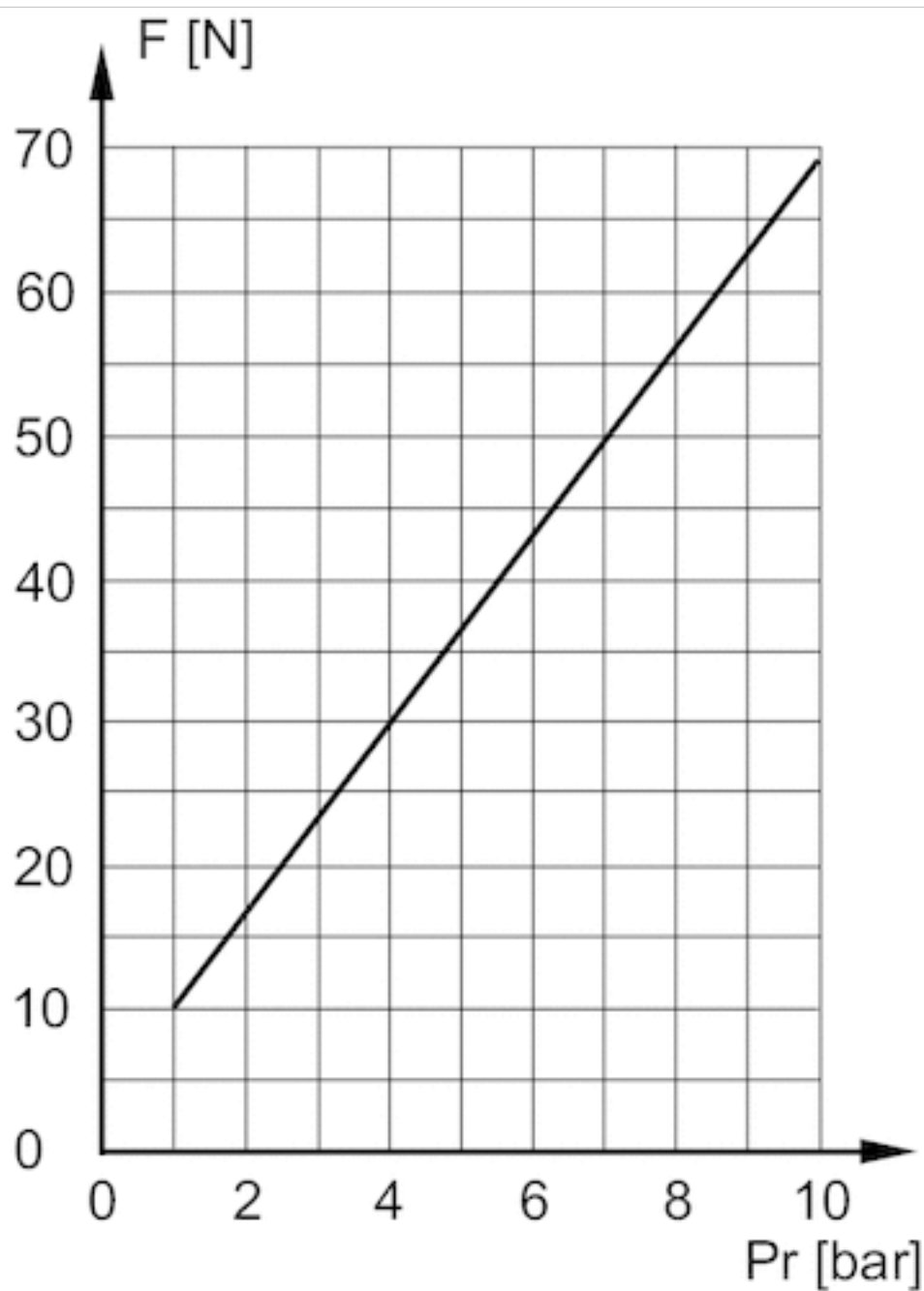
Cannot be combined with mushroom button with detent and rotary release R412012741

Dimensions, cut-out in the front plate



Diagrams

Actuating force+



F = actuating force
 Pr = return pressure

Efficient pneumatic solutions, our program: cylinders and drives, valves and valve systems, air supply management



Visit us: [Emerson.com/Aventics](https://emerson.com/aventics)

Your local contact: [Emerson.com/contactus](https://emerson.com/contactus)



Emerson.com



Facebook.com/EmersonAutomationSolutions



LinkedIn.com/company/Emerson-Automation-Solutions



Twitter.com/EMR_Automation

An example configuration is depicted on the title page. The delivered product may thus vary from that in the illustration. Subject to change. This Document, as well as the data, specifications and other information set forth in it, are the exclusive property of AVENTICS GmbH. It may not be reproduced or given to third parties without its consent. Only use the AVENTICS products shown in industrial applications. Read the product documentation completely and carefully before using the product. Observe the applicable regulations and laws of the respective country. When integrating the product into applications, note the system manufacturer's specifications for safe use of the product. The data specified only serve to describe the product. No statements concerning a certain condition or suitability for a certain application can be derived from our information. The information given does not release the user from the obligation of own judgement and verification. It must be remembered that the products are subject to a natural process of wear and aging.

The Emerson logo is a trademark and service mark of Emerson Electric Co. Brand logotype are registered trademarks of one of the Emerson family of companies. All other marks are the property of their respective owners. © 2020 Emerson Electric Co. All rights reserved.
2020-12



CONSIDER IT SOLVED™