




5/3-directional valve, Series CD02-AL

- ISO 15407-1, 18 mm
- Qn = 250-400 l/min
- Plate connection
- Compressed air connection output VDMA 02 base plate
- Can be assembled into blocks



Type	Spool valve, positive overlapping
Pilot	External
Blocking principle	Base plate principle, multiple
Sealing principle	Soft sealing
Connection type	Plate connection
Standards	ISO 15407-1, 18 mm
Compressed air connection	VDMA 02 base plate
version pneumatic port	VDMA 02 base plate
Working pressure min./max.	-0,9 ... 10 bar
Control pressure min./max.	2,2 ... 10 bar
Ambient temperature min./max.	0 ... 80 °C
Medium temperature min./max.	0 ... 80 °C
Medium	Compressed air Class 5-4-4 class 6-4-3
Max. particle size	5 µm
Oil content of compressed air	0 ... 5 mg/m³
Mounting screw	M3
Weight	0,11 kg

Technical data

Part No.			version pneumatic port	Flow
				Qn
0820239104		closed center	VDMA 02 base plate	400 l/min
0820239105		exhausted center	VDMA 02 base plate	250 l/min
0820239106		pressurized center	VDMA 02 base plate	250 l/min

Technical information

The min. control pressure must be adhered to, since otherwise faulty switching and valve failure may result!

The pressure dew point must be at least 15 °C under ambient and medium temperature and may not exceed 3 °C .

The oil content of compressed air must remain constant during the life cycle.

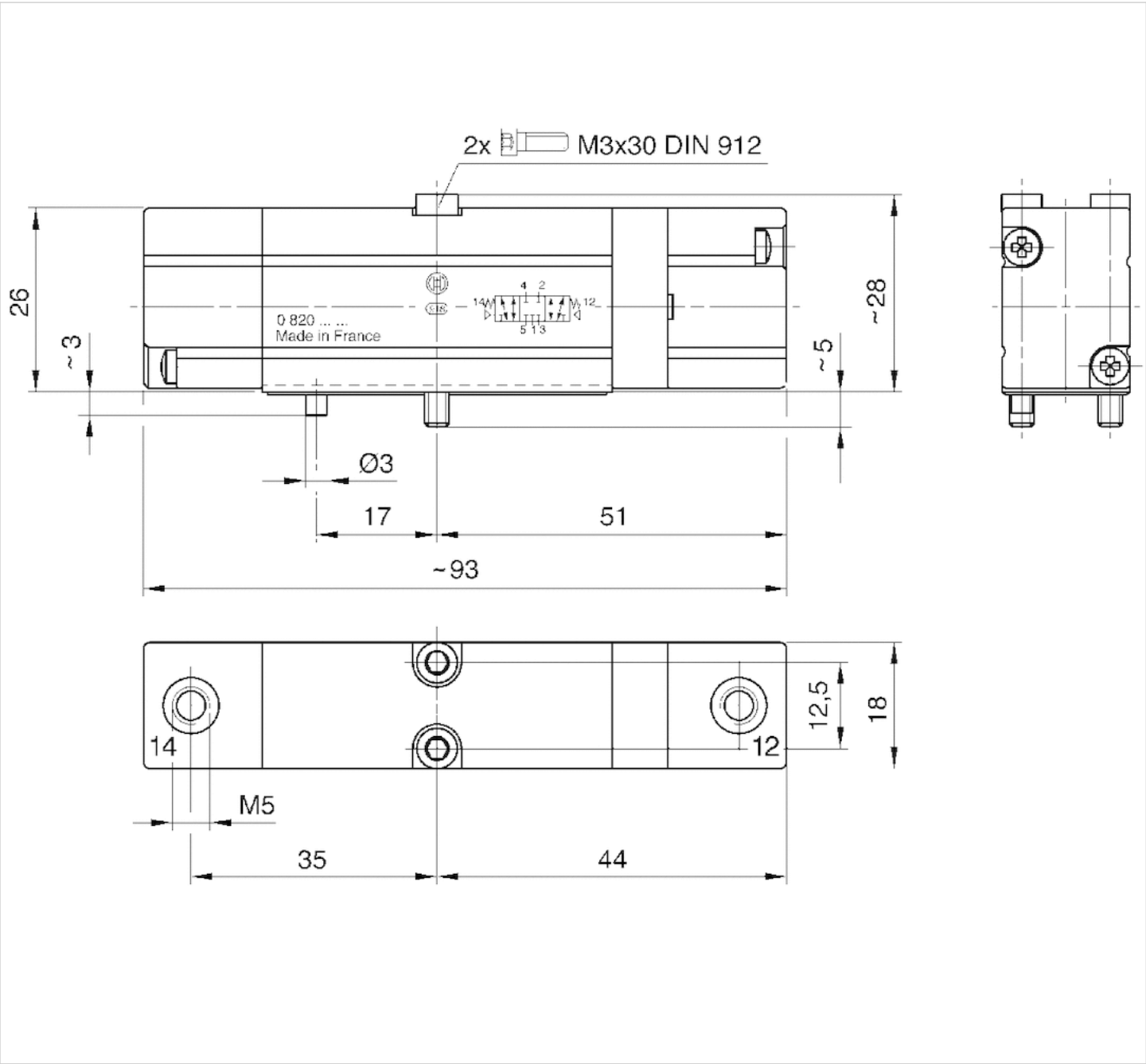
Use only the approved oils from AVENTICS. Further information can be found in the “Technical information” document (available in the MediaCentre).

Technical information

Housing	Aluminum, anodized
Seals	Acrylonitrile butadiene rubber Hydrogenated nitrile butadiene rubber
Front plate	Polyamide

Dimensions

Dimensions



Efficient pneumatic solutions, our program: cylinders and drives, valves and valve systems, air supply management



Visit us: [Emerson.com/Aventics](https://emerson.com/aventics)

Your local contact: [Emerson.com/contactus](https://emerson.com/contactus)



Emerson.com



Facebook.com/EmersonAutomationSolutions



LinkedIn.com/company/Emerson-Automation-Solutions



Twitter.com/EMR_Automation

An example configuration is depicted on the title page. The delivered product may thus vary from that in the illustration. Subject to change. This Document, as well as the data, specifications and other information set forth in it, are the exclusive property of AVENTICS GmbH. It may not be reproduced or given to third parties without its consent. Only use the AVENTICS products shown in industrial applications. Read the product documentation completely and carefully before using the product. Observe the applicable regulations and laws of the respective country. When integrating the product into applications, note the system manufacturer's specifications for safe use of the product. The data specified only serve to describe the product. No statements concerning a certain condition or suitability for a certain application can be derived from our information. The information given does not release the user from the obligation of own judgement and verification. It must be remembered that the products are subject to a natural process of wear and aging.

The Emerson logo is a trademark and service mark of Emerson Electric Co. Brand logotype are registered trademarks of one of the Emerson family of companies. All other marks are the property of their respective owners. © 2020 Emerson Electric Co. All rights reserved.
2020-12



CONSIDER IT SOLVED™