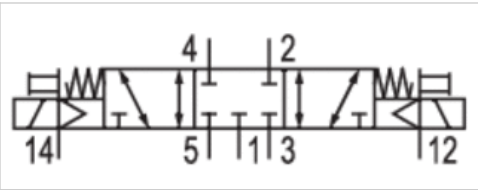



5/3-directional valve, Series HF02-LG

- For series : HF02-LG, CL03
- 5/3
- Qn = 1400 l/min
- Pilot valve width : 16 mm
- closed center
- Plate connection
- Manual override : without detent
- Pilot : External, Internal



| | |
|----------------------------------|-------------------------------------|
| Type | Spool valve, positive overlapping |
| Activation | Electrically |
| Pilot | External, Internal |
| Sealing principle | Soft sealing |
| Blocking principle | Single base plate principle |
| Certificates | UR (Underwriters Laboratories) |
| Working pressure min./max. | -0,9 ... 10 bar |
| Control pressure min./max. | 2,5 ... 10 bar |
| Ambient temperature min./max. | 0 ... 50 °C |
| Medium temperature min./max. | 0 ... 50 °C |
| Medium | Compressed air |
| Max. particle size | 5 µm |
| Oil content of compressed air | 0 ... 5 mg/m³ |
| Nominal flow Qn | 1400 l/min |
| Pilot control exhaust | With collective pilot air exhaust |
| Protection class with connection | IP65 |
| Protective circuit | Z-diode |
| Reverse polarity protection | Protected against polarity reversal |
| LED status display | Yellow |
| Duty cycle | 100 % |
| Typ. switch-on time | 14 ms |
| Typ. switch-off time | 15 ms |
| mounting screws | cross recessed DIN EN ISO 4757-Z2 |
| Mounting screw tightening torque | 1,3 Nm |
| Weight | 0,144 kg |

Technical data

| Part No. | MO | | Operational voltage | Voltage tolerance |
|------------|---|---------------|---------------------|-------------------|
| | | | DC | DC |
| 0820056602 |  | closed center | 24 V | -15% / +20% |

| Part No. | Power consumption | Flow conductance | Flow conductance |
|------------|-------------------|------------------|------------------|
| | DC | b | C-value |
| 0820056602 | 0,35 W | 0,4 | 5,87 l/(s*bar) |

Nominal flow Qn at 6 bar and Δp = 1 bar, MO = Manual override

Technical information

The min. control pressure must be adhered to, since otherwise faulty switching and valve failure may result!
The pressure dew point must be at least 15 °C under ambient and medium temperature and may not exceed 3 °C .
The oil content of compressed air must remain constant during the life cycle.
Use only the approved oils from AVENTICS. Further information can be found in the “Technical information” document (available in the MediaCentre).

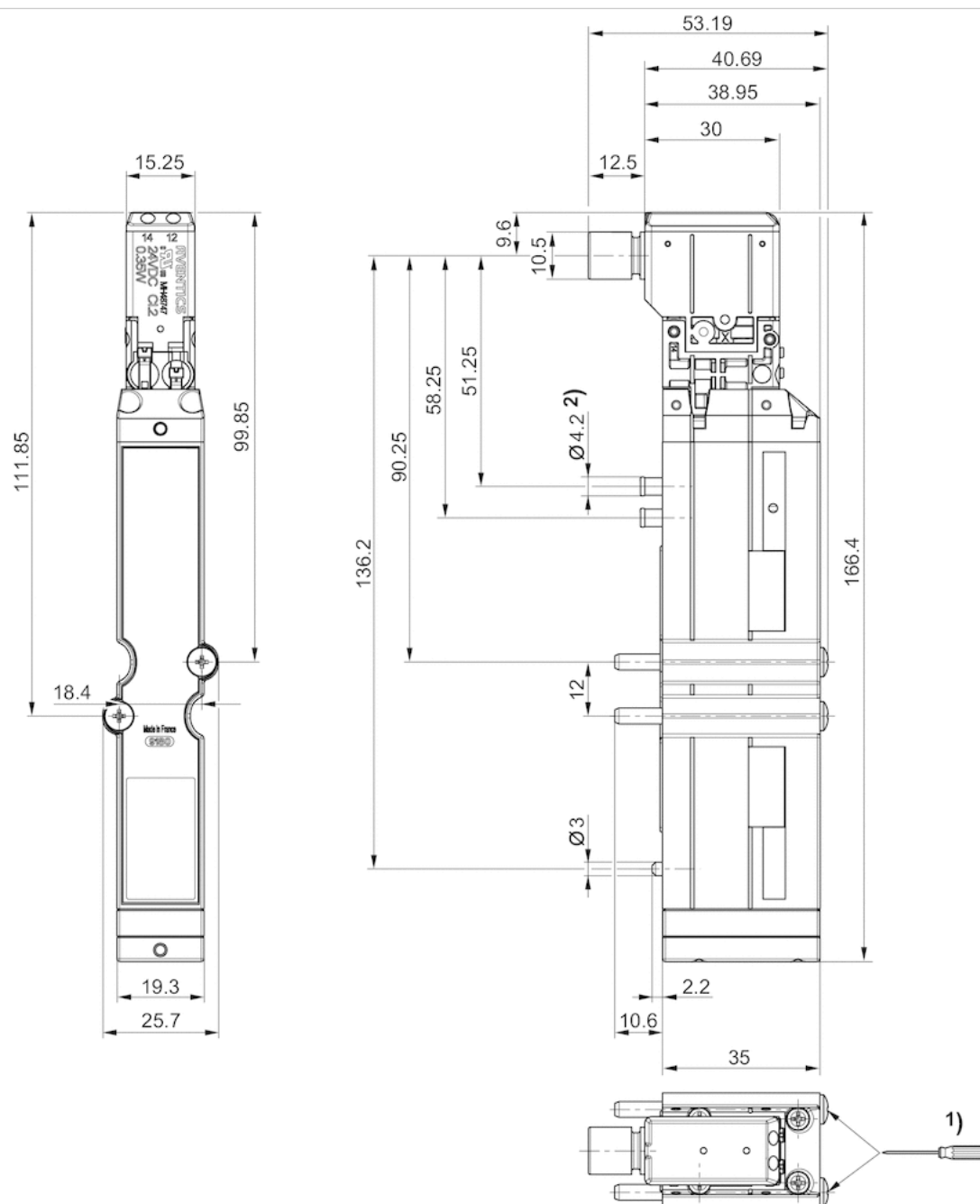
The pilot type (external/internal) is not implemented in the valve, but in the end plate of the valve system.
The pilot valve is UL (Underwriters Laboratories) certified.

Technical information

| Material | |
|----------|--|
| Housing | Polyamide |
| Seals | Acrylonitrile butadiene rubber Hydrogenated acrylonitrile butadiene rubber |

Dimensions

Dimensions



1) =1.1Nm 800tr/min. max.

Efficient pneumatic solutions, our program: cylinders and drives, valves and valve systems, air supply management



Visit us: [Emerson.com/Aventics](https://www.emerson.com/Aventics)

Your local contact: [Emerson.com/contactus](https://www.emerson.com/contactus)



Emerson.com



Facebook.com/EmersonAutomationSolutions



LinkedIn.com/company/Emerson-Automation-Solutions



Twitter.com/EMR_Automation

An example configuration is depicted on the title page. The delivered product may thus vary from that in the illustration. Subject to change. This Document, as well as the data, specifications and other information set forth in it, are the exclusive property of AVENTICS GmbH. It may not be reproduced or given to third parties without its consent. Only use the AVENTICS products shown in industrial applications. Read the product documentation completely and carefully before using the product. Observe the applicable regulations and laws of the respective country. When integrating the product into applications, note the system manufacturer's specifications for safe use of the product. The data specified only serve to describe the product. No statements concerning a certain condition or suitability for a certain application can be derived from our information. The information given does not release the user from the obligation of own judgement and verification. It must be remembered that the products are subject to a natural process of wear and aging.

The Emerson logo is a trademark and service mark of Emerson Electric Co. Brand logotype are registered trademarks of one of the Emerson family of companies. All other marks are the property of their respective owners. © 2020 Emerson Electric Co. All rights reserved.
2020-12



CONSIDER IT SOLVED™