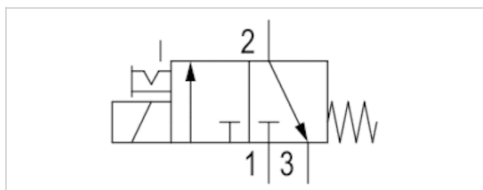










3/2-directional valve, Series DO35

- 3/2
- NC
- Pipe connection
- Compressed air connection output : G 1/8
- Electrical connection : Plug, EN 175301-803, form A
- Can be assembled into blocks
- Manual override : with detent
- With spring return



Type	Poppet valve
Activation	Electrically
Sealing principle	Soft sealing
Working pressure min./max.	0 ... 10 bar
Ambient temperature min./max.	-10 ... 50 °C
Medium temperature min./max.	-10 ... 50 °C
Medium	Compressed air
Max. particle size	5 µm
Oil content of compressed air	0 ... 5 mg/m ³
Nominal flow 1 ► 2	140 l/min
Nominal flow 2 ► 3	130 l/min
Protection class with connection	IP65
Duty cycle	100 %
mounting screws	M5

Technical data

Part No.	MO		Compressed air connection	
			Input	Output
0820005101		NC	G 1/8	G 1/8
0820005103		NC	G 1/8	G 1/8
0820005102		NC	G 1/8	G 1/8
0820005100		NC	G 1/8	G 1/8
0820005151		NC	G 1/8	G 1/8
0820005153		NC	G 1/8	G 1/8
0820005152		NC	G 1/8	G 1/8
0820005150		NC	G 1/8	G 1/8

Part No.	Compressed air connection	Operational voltage	Operational voltage
	Exhaust	DC	AC 50 Hz
0820005101	G 1/8	24 V	-
0820005103	G 1/8	-	24 V
0820005102	G 1/8	-	-
0820005100	G 1/8	-	230 V
0820005151	G 1/8	24 V	-

Part No.	Compressed air connection	Operational voltage	Operational voltage
	Exhaust		
0820005153	G 1/8	-	24 V
0820005152	G 1/8	-	-
0820005150	G 1/8	-	230 V

Part No.	Operational voltage	Voltage tolerance	Voltage tolerance	Voltage tolerance
	AC 60 Hz	DC	AC 50 Hz	AC 60 Hz
0820005101	-	-10% / +10%	-	-
0820005103	-	-	-10% / +10%	-
0820005102	110 V	-	-	-10% / +10%
0820005100	-	-	-10% / +10%	-
0820005151	-	-10% / +10%	-	-
0820005153	-	-	-10% / +10%	-
0820005152	110 V	-	-	-10% / +10%
0820005150	-	-	-10% / +10%	-

Part No.	Power consumption	Holding power	Switch-on power
	DC	AC 50 Hz	AC 50 Hz
0820005101	8 W	-	-
0820005103	-	14 VA	21 VA
0820005102	-	14 VA	21 VA
0820005100	-	14 VA	21 VA
0820005151	8 W	-	-
0820005153	-	14 VA	21 VA
0820005152	-	14 VA	21 VA
0820005150	-	14 VA	21 VA

Part No.	Blocking principle	
0820005101	-	1)
0820005103	-	1)
0820005102	-	1)
0820005100	-	1)
0820005151	Single base plate principle	2)
0820005153	Single base plate principle	2)
0820005152	Single base plate principle	2)
0820005150	Single base plate principle	2)

Nominal flow Q_n at 6 bar and Δp = 1 bar, MO = Manual override

1) single connecting valve

2) manifold valve

Technical information

The min. control pressure must be adhered to, since otherwise faulty switching and valve failure may result!

The pressure dew point must be at least 15 °C under ambient and medium temperature and may not exceed 3 °C .

The oil content of compressed air must remain constant during the life cycle.

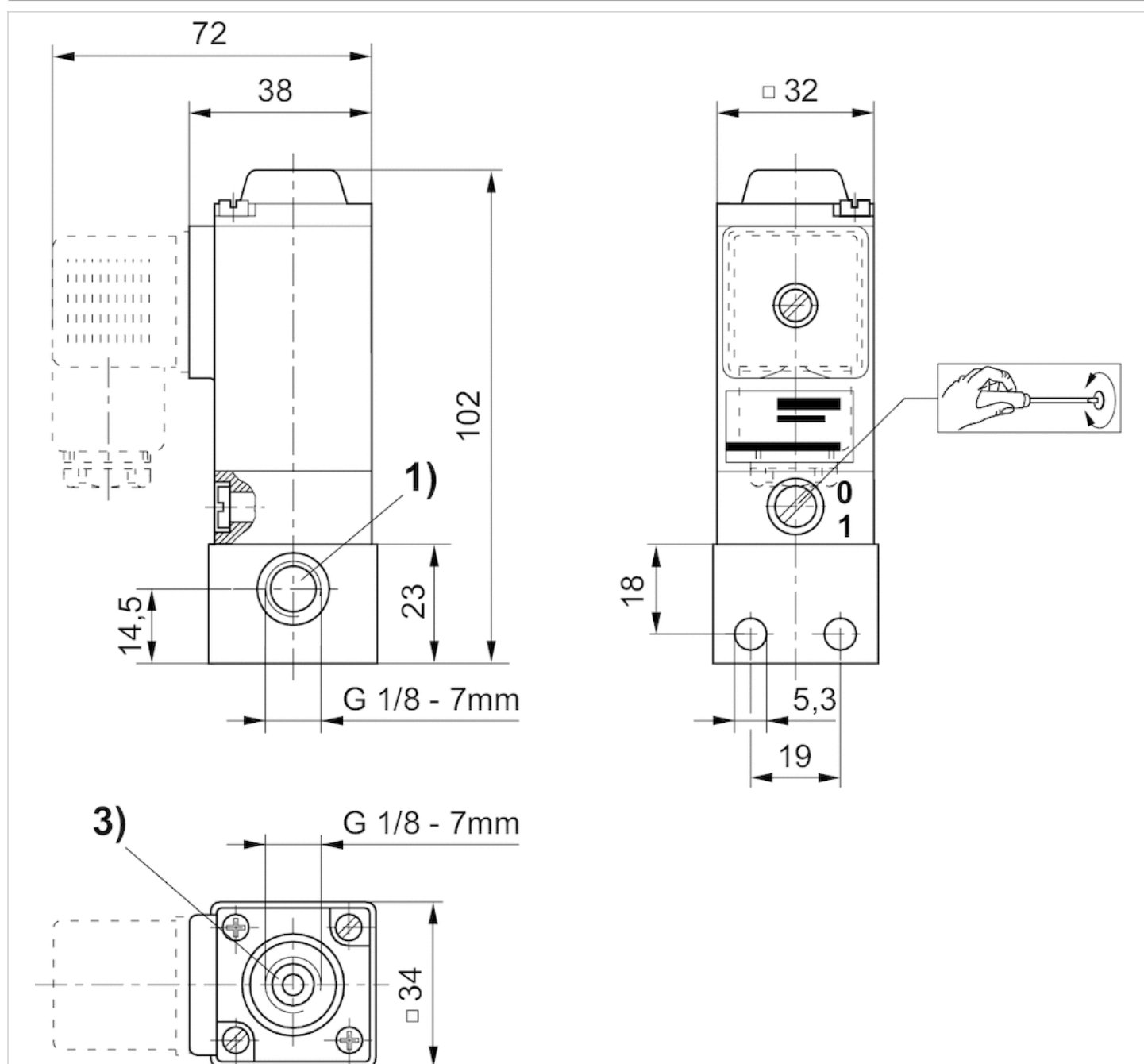
Use only the approved oils from AVENTICS. Further information can be found in the "Technical information" document (available in the MediaCentre).

Technical information

Material	
Seals	Fluorocaoutchouc

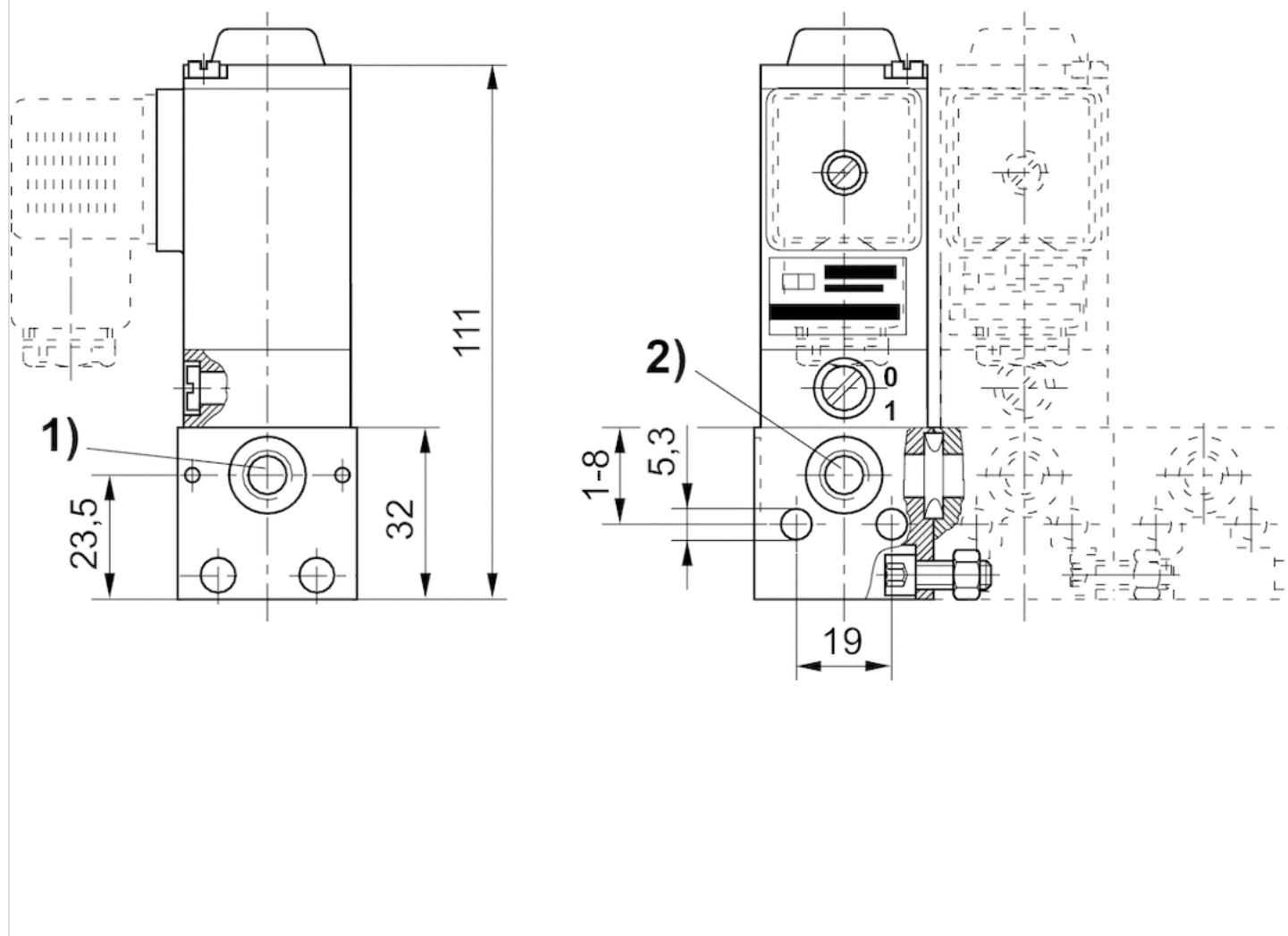
Dimensions

single connecting valve



- 1) Port 1 (Input)
3) Port 3 (Exhaust)

manifold valve



Scope of delivery: 2 screws M5x12, 2 nuts M5 DIN 934, 1 O-ring

1) Port 1 (Input)

2) Port 2 (Output)

Efficient pneumatic solutions, our program: cylinders and drives, valves and valve systems, air supply management



Visit us: [Emerson.com/Aventics](https://www.emerson.com/Aventics)

Your local contact: [Emerson.com/contactus](https://www.emerson.com/contactus)



Emerson.com



Facebook.com/EmersonAutomationSolutions



LinkedIn.com/company/Emerson-Automation-Solutions



Twitter.com/EMR_Automation

An example configuration is depicted on the title page. The delivered product may thus vary from that in the illustration. Subject to change. This Document, as well as the data, specifications and other information set forth in it, are the exclusive property of AVENTICS GmbH. It may not be reproduced or given to third parties without its consent. Only use the AVENTICS products shown in industrial applications. Read the product documentation completely and carefully before using the product. Observe the applicable regulations and laws of the respective country. When integrating the product into applications, note the system manufacturer's specifications for safe use of the product. The data specified only serve to describe the product. No statements concerning a certain condition or suitability for a certain application can be derived from our information. The information given does not release the user from the obligation of own judgement and verification. It must be remembered that the products are subject to a natural process of wear and aging.

The Emerson logo is a trademark and service mark of Emerson Electric Co. Brand logotype are registered trademarks of one of the Emerson family of companies. All other marks are the property of their respective owners. © 2020 Emerson Electric Co. All rights reserved.
2020-12



CONSIDER IT SOLVED™